



Home center 3.0.0.46+ integration with 2N

The 2N interface functionality is available exclusively on the Home center interface Server (VMBHIS or HIS)

Revision 09-01-2017

More info <http://www.homecenter.be>

Table of Contents

1 Basic concept	3
2 Requirements	3
2.1 Enhanced license	3
2.2 Home center upgrade	3
3 Install and configure the 2N device	4
3.1 Basic installation and configuration	4
3.2 Configure the 2N device to allow Home center to communicate with the device	4
4 Configuration in Home center	6
4.1 License	6
4.2 Adding the camera	7
4.2.1 Configuration	7
4.2.2 Add the camera on a zone	10
4.3 2N I/O switches / inputs / outputs in Home center	12
4.4 Add the 2N components next to the camera image	14
4.5 Link a 2N switch to a physical button of the home automation system	16

1 Basic concept

The software of the 2N devices already have a very wide range of features, like capturing and e-mailing camera images, register multiple cards (with RFID interface) or different key codes (with the keypad).

However you can still add extra possibilities by connecting it to your Home automation system through Home center (VIS or VMBHIS).

- It is possible to operate 2N switches and outputs in your home automation system
- See and react on feedback of the 2N device in Home center

2 Requirements

Before you can start, you need to correctly setup and configure the 2N device.

2.1 Enhanced license

To be able to communicate with 2N, an upgrade in license is required for the 2N device: the Enhanced integration license is required.

https://stijnen.be/shop/index.php?id_product=217&controller=product&id_lang=1

2.2 Home center upgrade

Also for Home center an upgrade is required:

https://stijnen.be/shop/index.php?id_product=205&controller=product&id_lang=1

or

https://stijnen.be/shop/index.php?id_product=206&controller=product&id_lang=1

3 Install and configure the 2N device

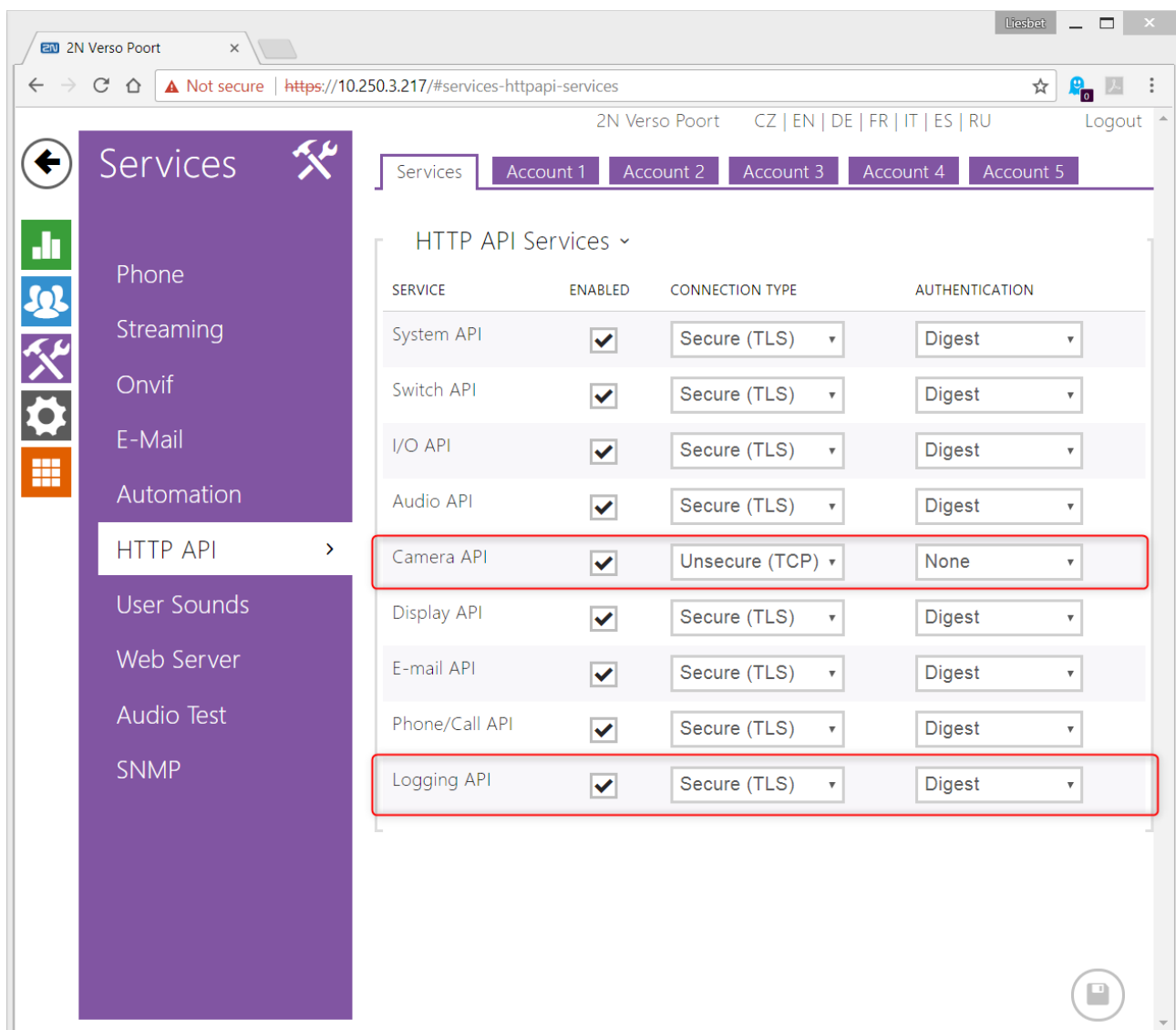
3.1 Basic installation and configuration

Make sure the 2N device is connected to the local network and is in the same network as the HIS module.

How to configure the 2N device is described in the manuals of the 2N device.

3.2 Configure the 2N device to allow Home center to communicate with the device

The camera API and Logging API must be enabled. As indicated in the screenshot:



An account must be created with a username and password.

User privileges must be activated for I/O Acces, Switch Acces, Camera Access, ID (Cards) and Keypad access:

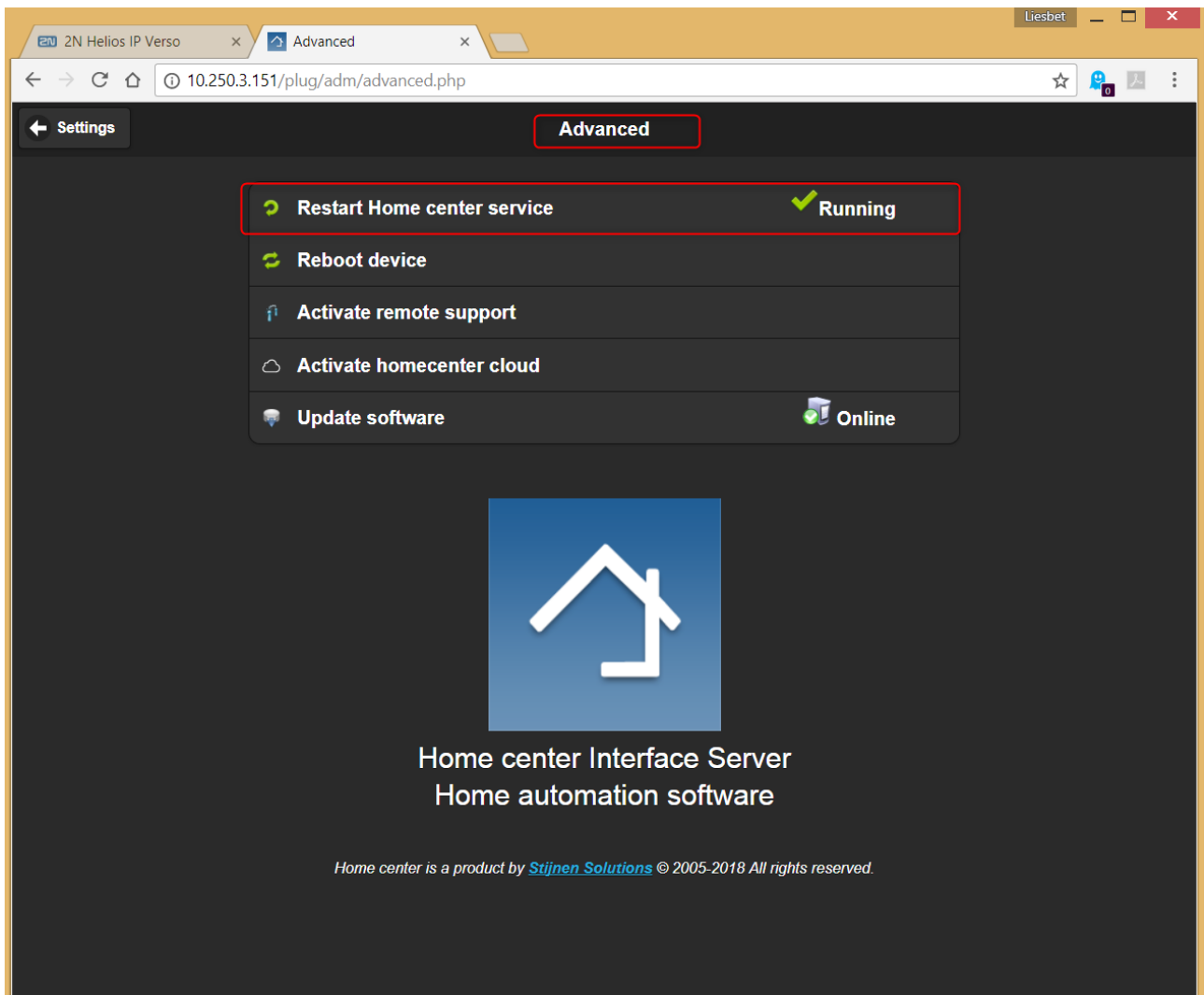
The screenshot shows the '2N Verso Poort' web interface. The browser address bar displays 'https://10.250.3.217/#services-httpapi-account?tabindex=0'. The interface has a purple sidebar on the left with the 'Services' menu expanded, showing options like Phone, Streaming, Onvif, E-Mail, Automation, HTTP API, User Sounds, Web Server, Audio Test, and SNMP. The main content area is titled 'User Settings' and 'User Privileges'. Under 'User Settings', the 'User Name' is 'admin' and the 'Password' is masked with dots. Under 'User Privileges', a table lists various access types with checkboxes for 'MONITORING' and 'CONTROL'. The following table represents the data shown in the 'User Privileges' section:

DESCRIPTION	MONITORING	CONTROL
System Access	<input checked="" type="checkbox"/>	<input checked="" type="checkbox"/>
Phone/Call Access	<input checked="" type="checkbox"/>	<input checked="" type="checkbox"/>
I/O Access	<input checked="" type="checkbox"/>	<input checked="" type="checkbox"/>
Switch Access		<input checked="" type="checkbox"/>
Audio Access		<input checked="" type="checkbox"/>
Camera Access	<input checked="" type="checkbox"/>	
Display Access		<input checked="" type="checkbox"/>
E-Mail Service Access		<input checked="" type="checkbox"/>
UID (Cards & Wiegand) Access	<input checked="" type="checkbox"/>	
Keypad access	<input checked="" type="checkbox"/>	

4 Configuration in Home center

4.1 License

Make sure you have purchased the license upgrade and you received the notification from your reseller that the license is upgraded to include the camera upgrade is available. Activate the upgraded license by restarting the home center service:

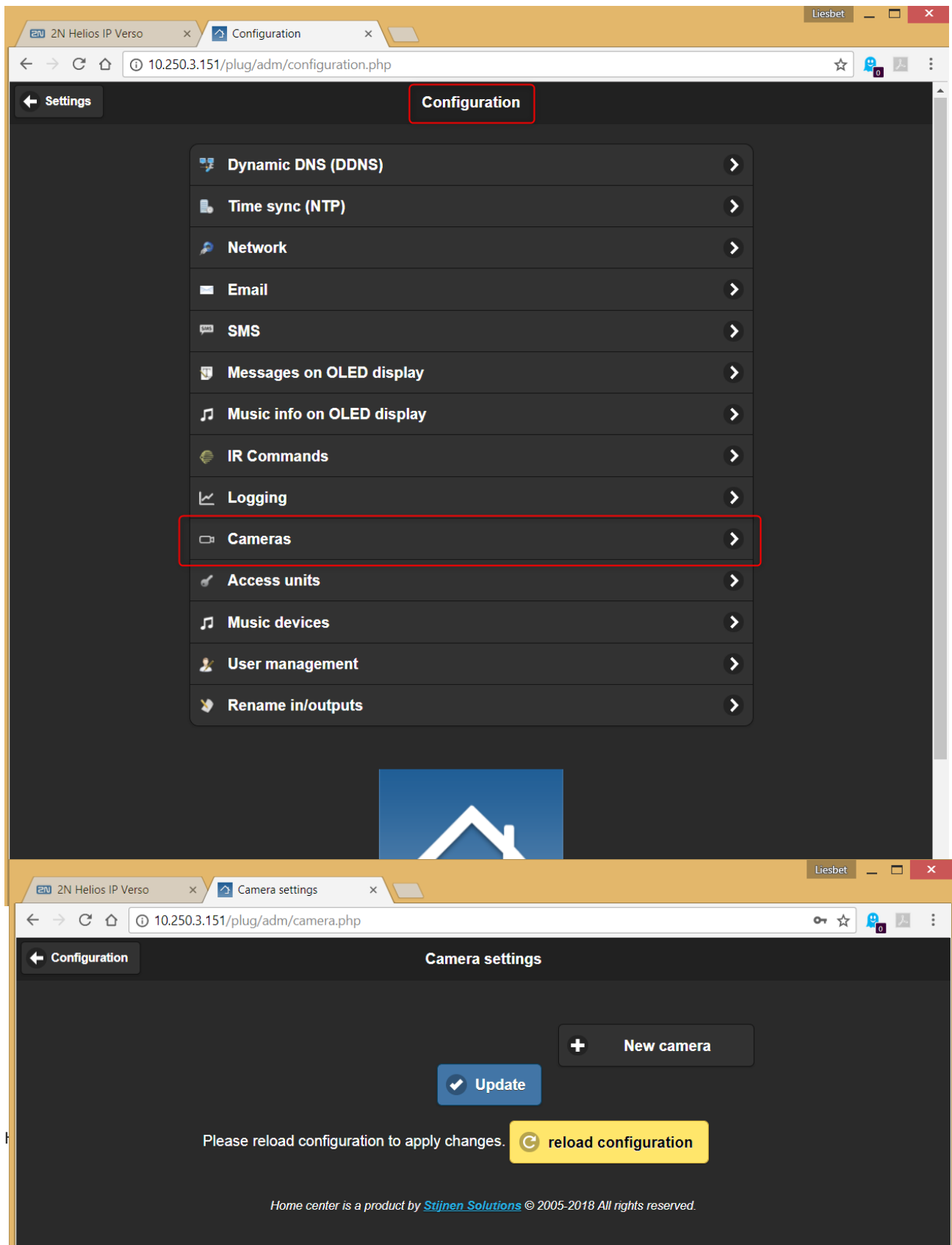


4.2 Adding the camera

4.2.1 Configuration

Log in to the webinterface and go to the settings.

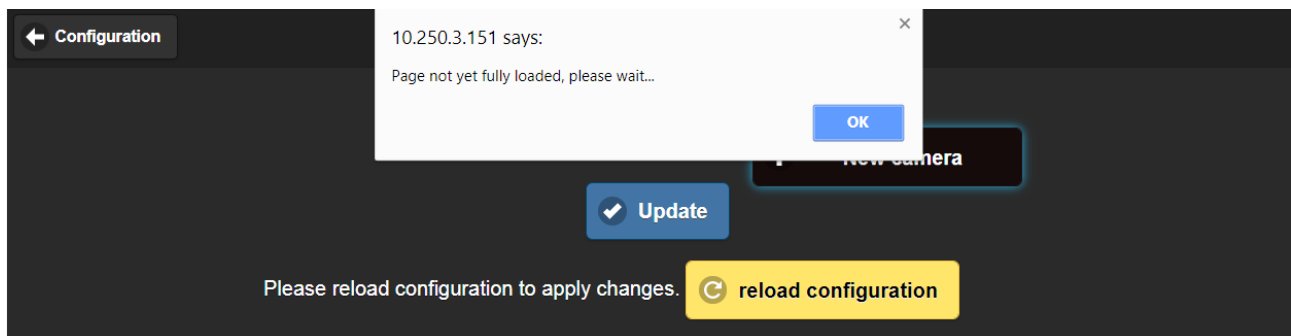
From the settings / configuration, you will find the option 'camera'. Open it by clicking it. This will open the camera settings.



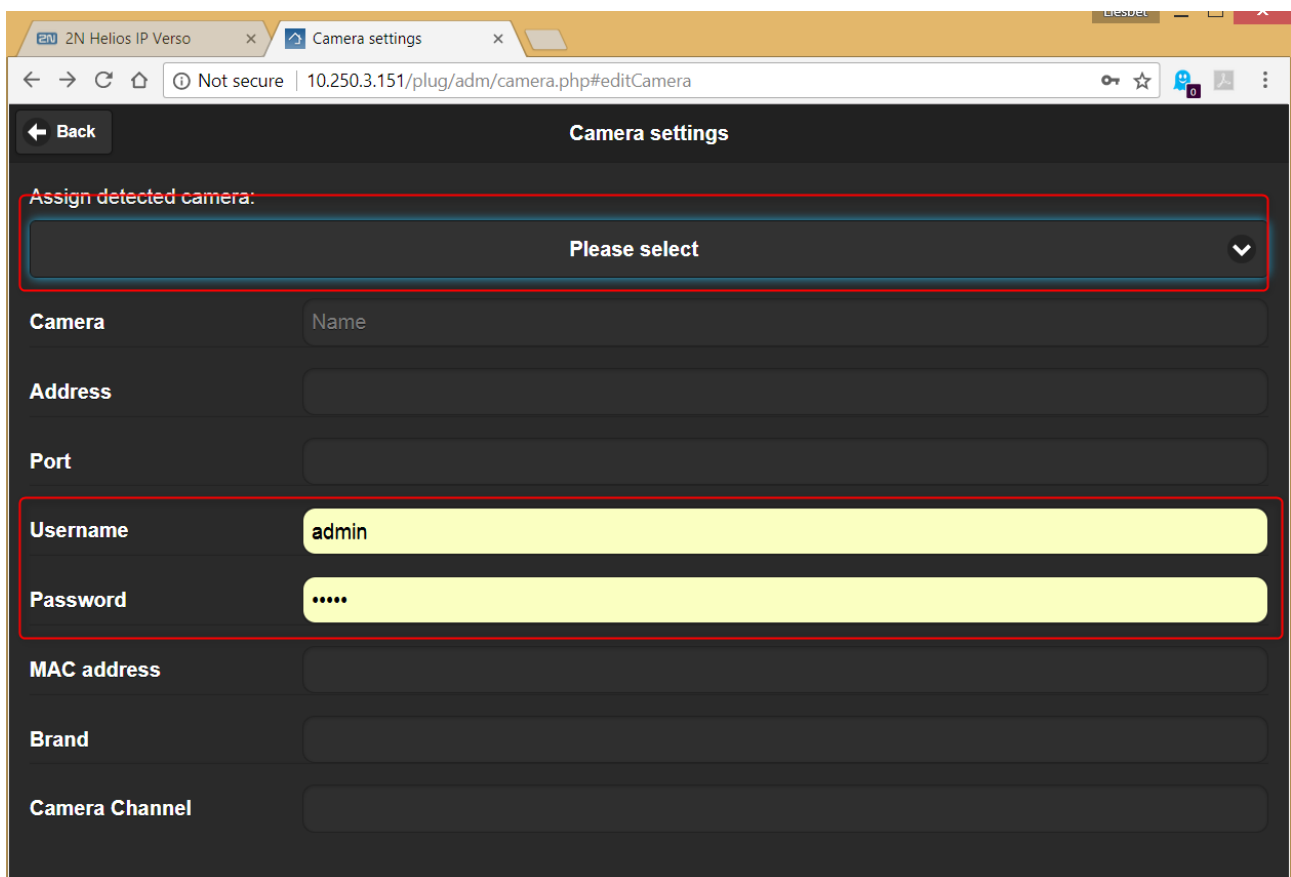
Click the '+ new camera' button.

Note

It is possible that you receive this message: "Page not yet fully loaded"



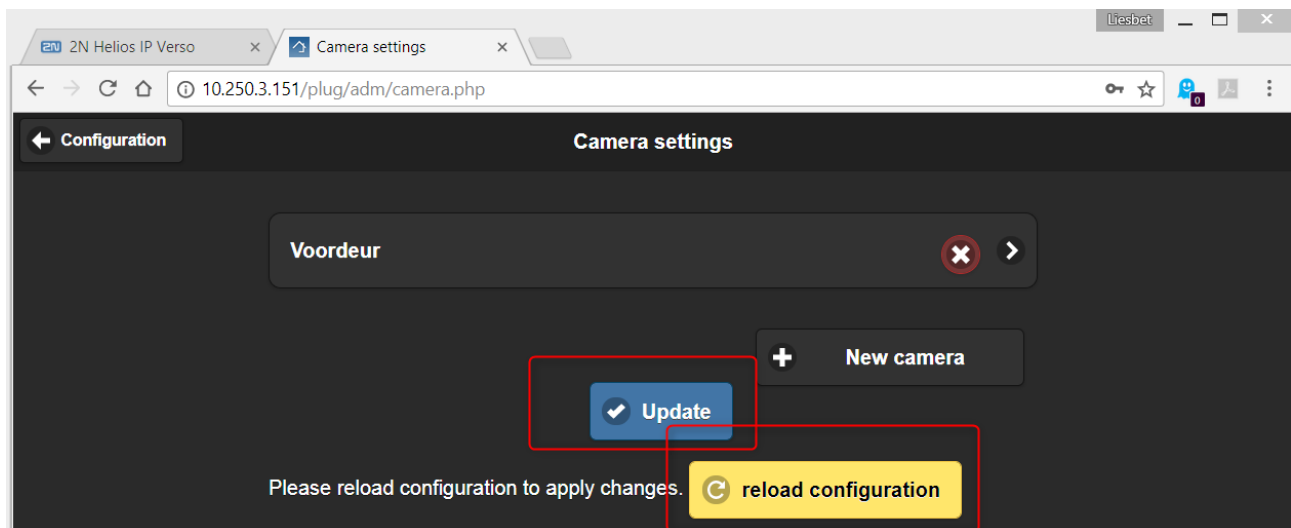
This happens when the interface is still looking up camera's in your network. Just wait a few seconds and click "+ new camera" again.



The screen will allow you to add a camera. Click the dropdown at the top of the screen. A list of the available camera's that are recognized by Home center are shown. The 2N camera should be available.

Fill in the username and password as you have set them for the 2N account earlier.

Click 'Back'.



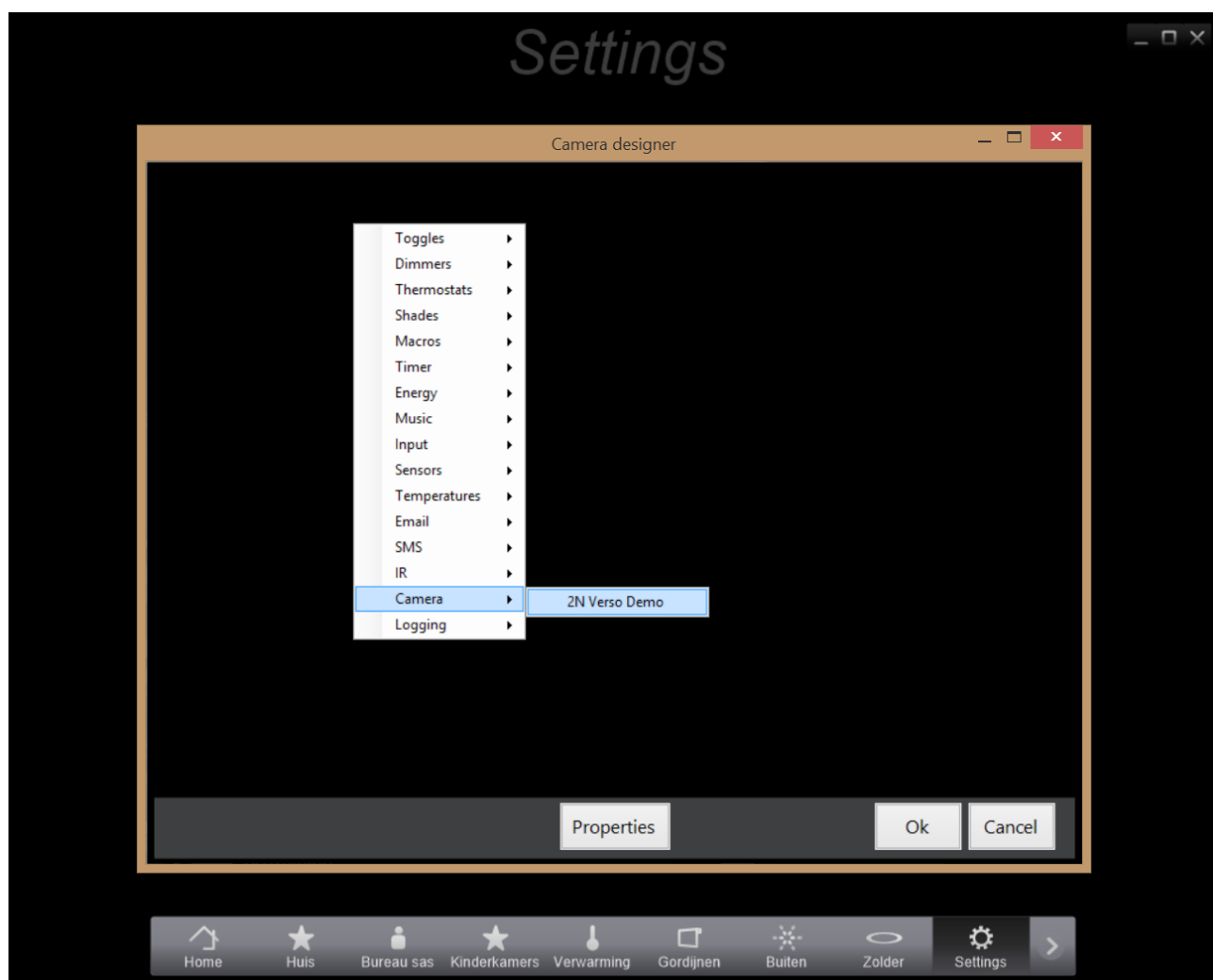
Click 'Update' to save the new camera.

Click 'Reload configuration' to make the camera available for Home center.

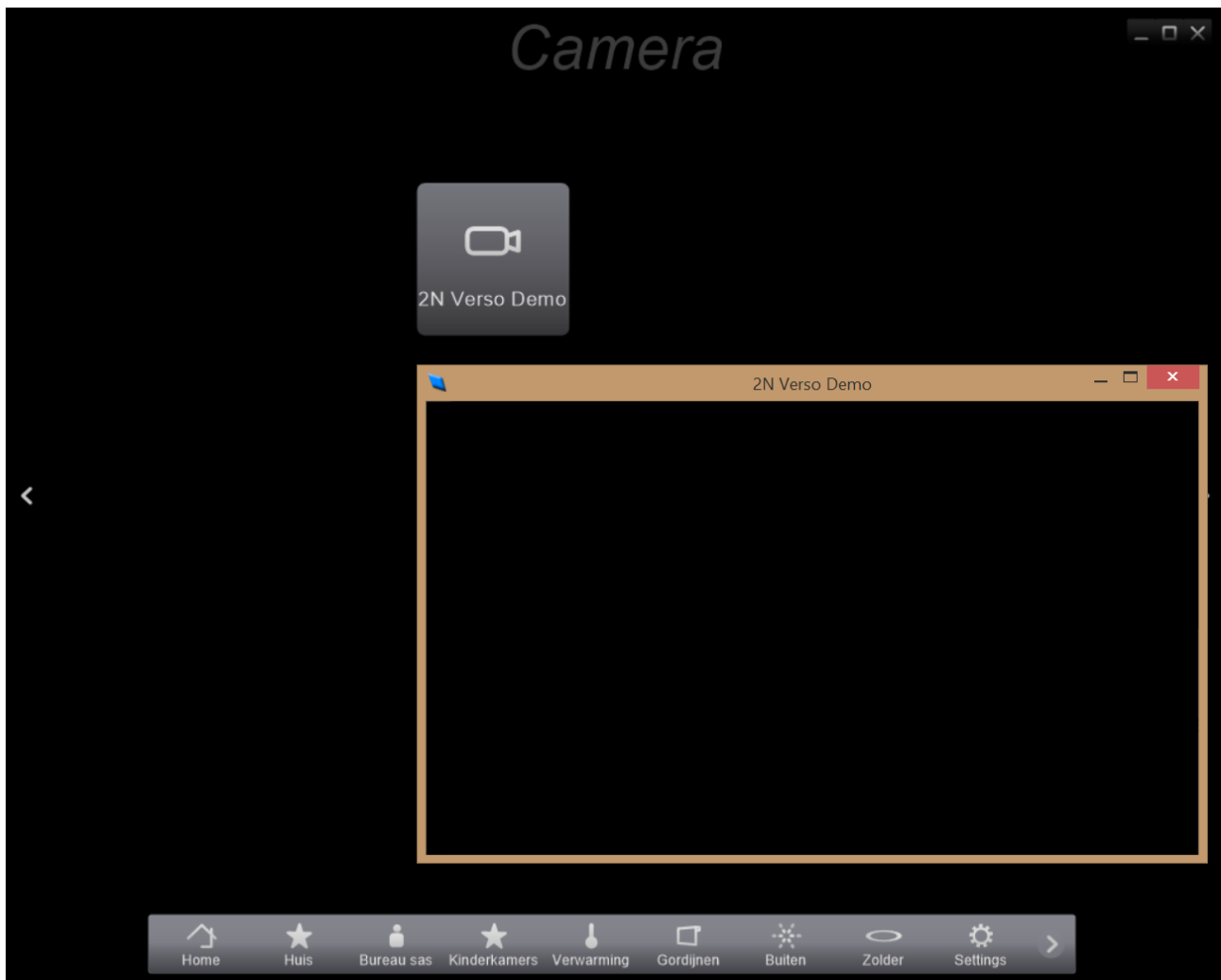
4.2.2 Add the camera on a zone

Open the windows client. Go to the settings and open the 'Manage zones'.

Select the appropriate zone where you want to load the camera image from. Find the camera list in the pop up menu (right click on a blank spot on the screen) and add the camera:



Now the camera stream can be loaded from that zone from any Home center client:
Windows, iPhone/iPad, Web(Android).



4.3 2N I/O switches / inputs / outputs in Home center

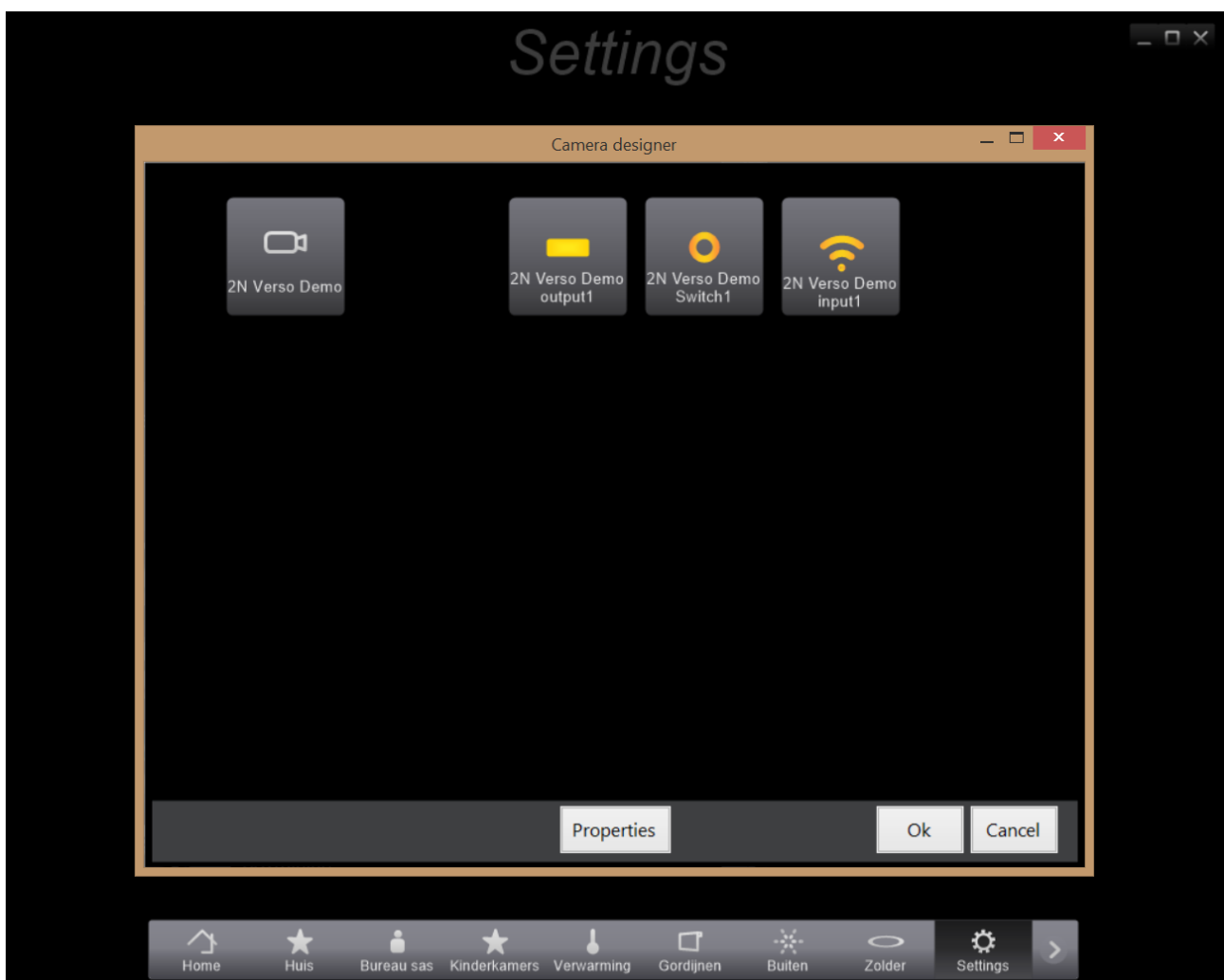
The I/O switches can be programmed within 2N (see 2N documentation). When this is done, Home center will make these available automatically to be put on a zone or also in the logic interface (this last part is covered further in this manual).

After the 2N has been programmed. Restart the home center service. Home center will read the changes automatically from the 2N device and make these switches and in- and outputs available.

Open the windows client. Go to the settings and open the 'Manage zones'.

Select the appropriate zone where you want to add the buttons. Open the popup menu (right click on a blank spot on the screen).

- 2N Switches are available in the list of inputs: these can be operated from within Home center
- 2N Outputs are available in the list of outputs: these can be operated from within Home center
- 2N Inputs are available in the list of sensors: these can **not** be operated from within Home center



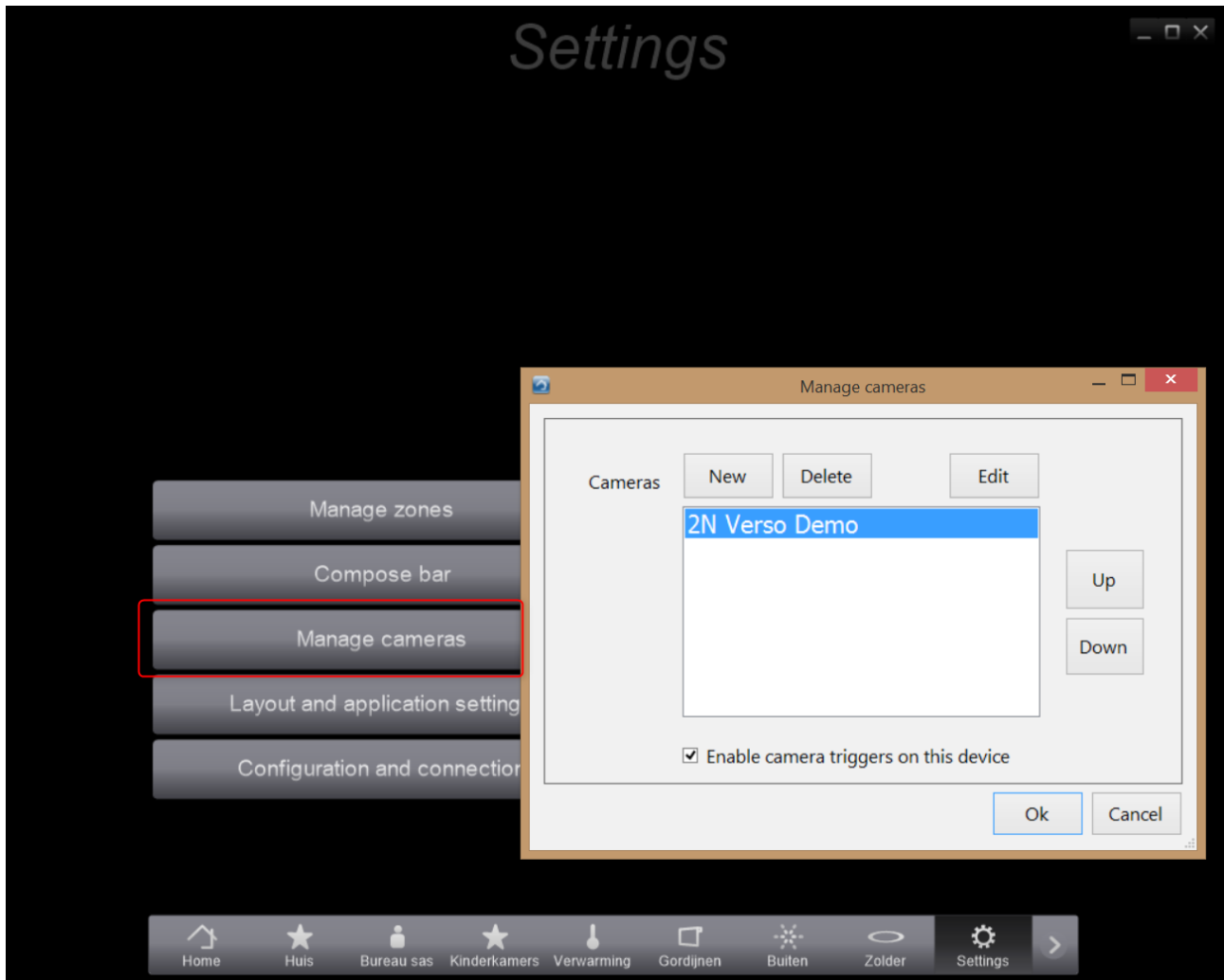
You can now operate the switches and outputs and read their status on screen. Also from the 2N input you can read the status:



4.4 Add the 2N components next to the camera image

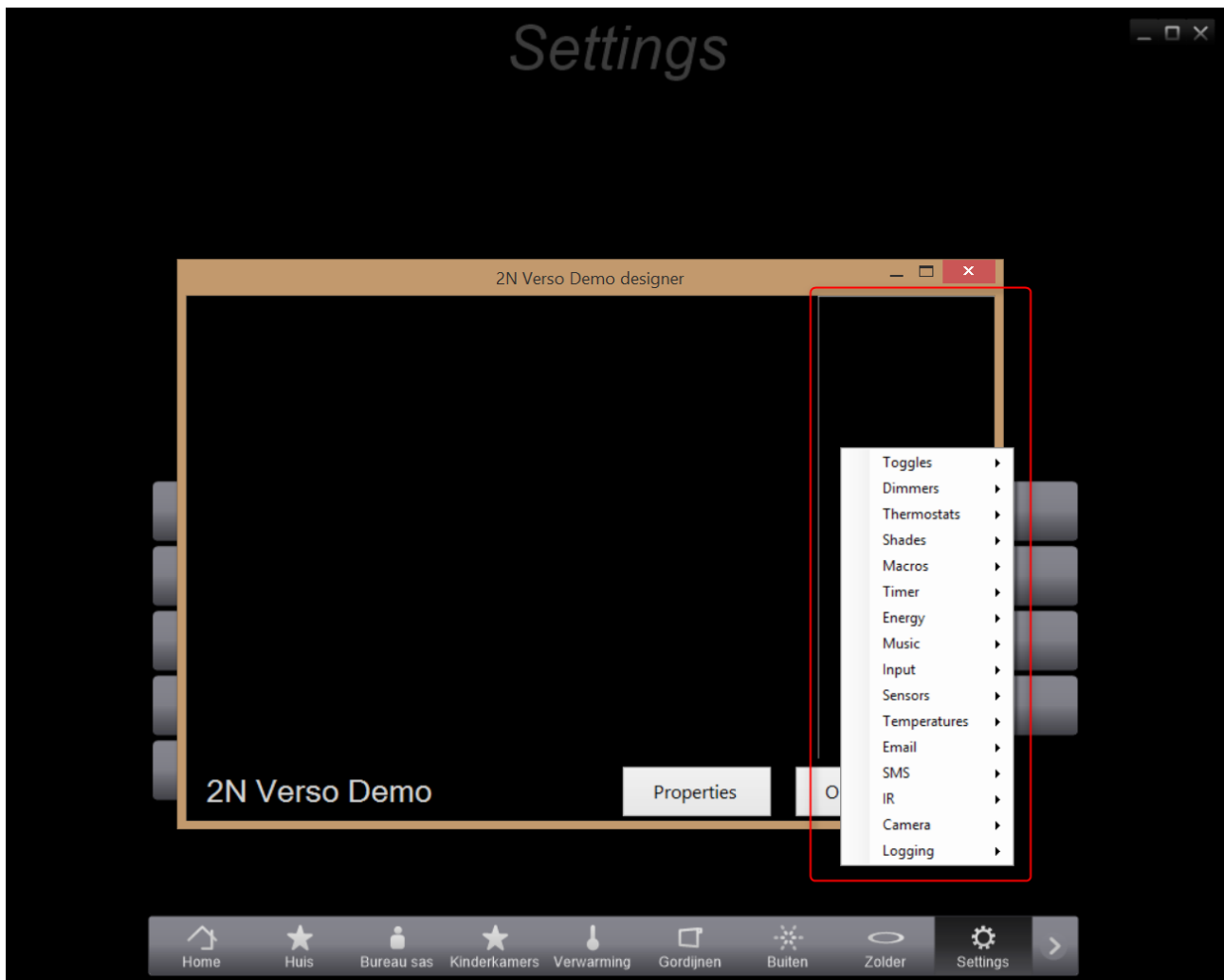
It is also possible to directly add the buttons related to the 2N device next to the camera image on screen:

Open the windows client. Go to the settings and open the 'Manage zones'.



Select the appropriate camera and click 'Edit'.

The camera image will appear in the left center part of the screen. On the right side of the screen you can add any available buttons, similar as in the manage zone interface:

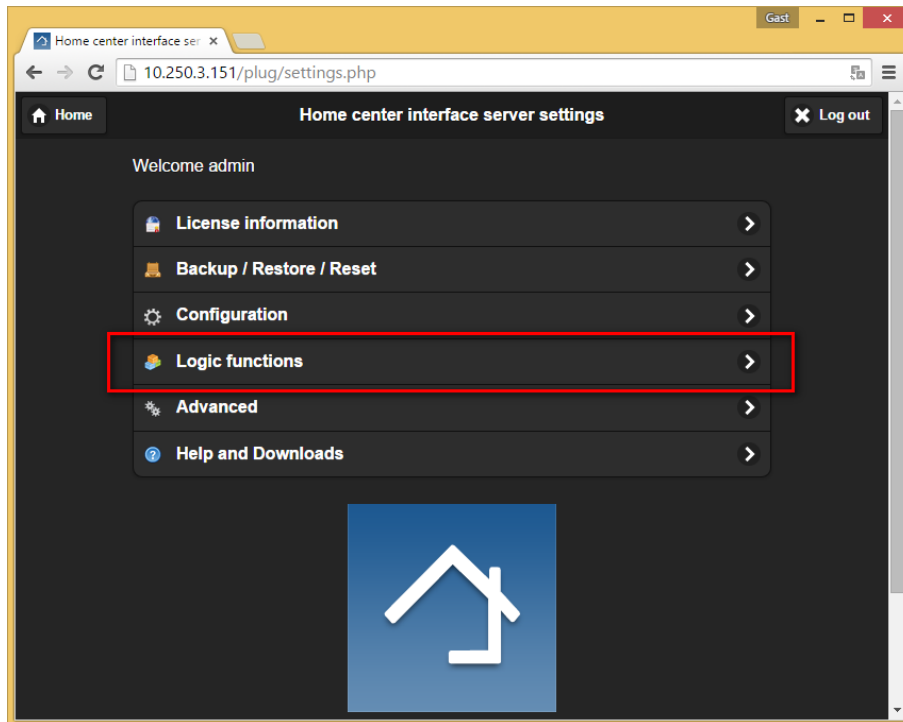


This way you have all important buttons directly available next to your camera feed.

4.5 Link a 2N switch to a physical button of the home automation system

Now you need add a Logic rule to link the IR command to a button of the Home automation system.

For this we need to go to the Logic interface on the settings page.



How the Logic module works and needs to be configured, please see the Logic guide of Home center!