

# HOME CENTER

HOME AUTOMATION SERVER



[www.homecenter.be/start](http://www.homecenter.be/start)

**Windows client 4.1.0.9**  
Installation guide

August 2020

1. What is this guide for?.....	2
2. About Home center .....	2
3. Home center requirements .....	2
4. First time installation .....	4
5. Running Home center Windows Client .....	5
6. Installing on other computers .....	6
7. Updating to new version.....	6

## 1. What is this guide for?

This guide helps you to install Home center Windows client for your Home center Interface Server.

We advise you to follow the full online training on <https://www.homecenter.be/start>

## 2. About Home center

The Home center Interface Server runs the Home center server.  
Home center is software by Stijnen Solutions to operate your home automation installation.

Please check the getting started guide of the Home center Interface Server. To make the initial setup.

The most recent information about Home center and Home center Interface Server can be found at <https://www.homecenter.be>

## 3. Home center requirements

This is a short overview of the software and hardware related aspects that you need to be aware of.

Home center server is pre-installed on the Home center Interface Server. This must be correctly installed. Please check the getting started guide delivered with the Home center Interface Server.

Home center Windows client runs on a **Windows PC**.

Home center for iPhone/iPad runs on iOS4+ and must be acquired separately from the Apple App store.

### Please note

Home center Interface Server is required to use Home center for iPhone/iPad!  
Home center client on Windows is required to configure your Home center software installation.  
Home center for iPhone/iPad downloads automatically the configuration from the Home center Server Interface

### Home center client supported operating system

Windows 8 or 10

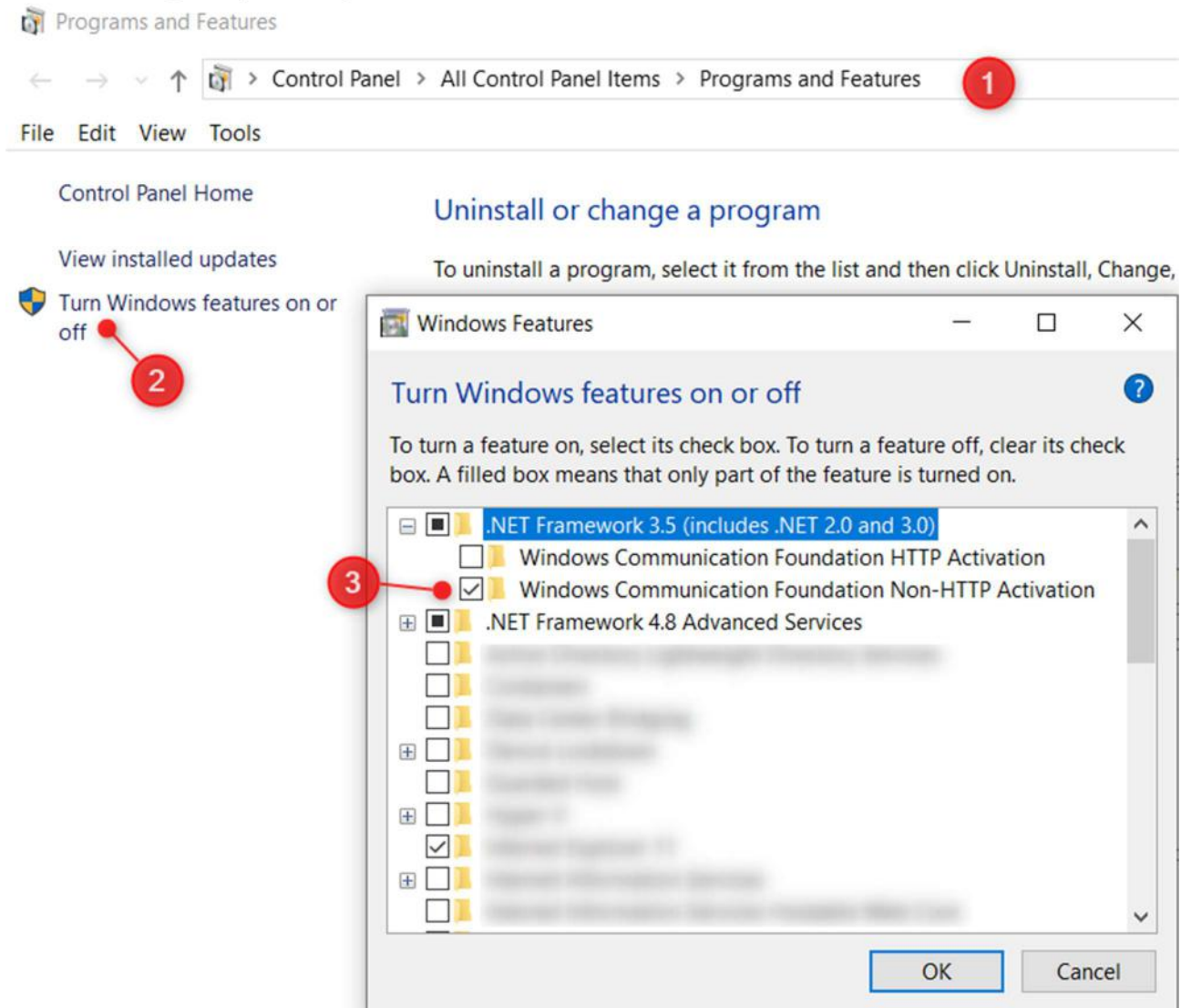
Home center has been successfully tested on some of the embedded versions. However we are not able to provide support for these.

### Required software

Microsoft .Net Framework 2.0 or higher.

If you get **errors** about the .net Framework 2.0 while installing / starting the Windows client

If the program offers to go to the Microsoft downloads, don't follow this link. Go to the Programs and features settings on your computer:



Tick the .Net Framework 3.5 (includes .Net 2.0 and 3.0) / Windows Communication Foundation Non-HTTP Activation and click OK to confirm.

### PC hardware requirements

Home center is a very light weight software and does not require a very extensive hardware setup.

### Monitor

A minium resolution of 800x600 pixels.

The Home center client is designed to be used on a touch monitor, although a touch monitor is not strictly necessary to use the software.

### Other required hardware

To use Home center you need an operating domotic home automation system!

Depending on your domotic system you need a network connection or an usb cable to connect between your domotic system and the Home center Interface Server.

### Home center for iPhone/iPad requirements

iPhone, iPod touch or iPad with iOS4+.  
You must have access to the App store to download the app.  
WiFi or G4<sup>1</sup> connectivity.  
Home center server is required to connect to the system!

### Camera connectivity

Windows 32-bit or 64-bit OS  
See supported camera systems on  
<http://homecenter.be/software-features/camera/>

### Web Browser (Android and other operating systems)

Webbrowser must support HTML5 and websockets

## 4. First time installation

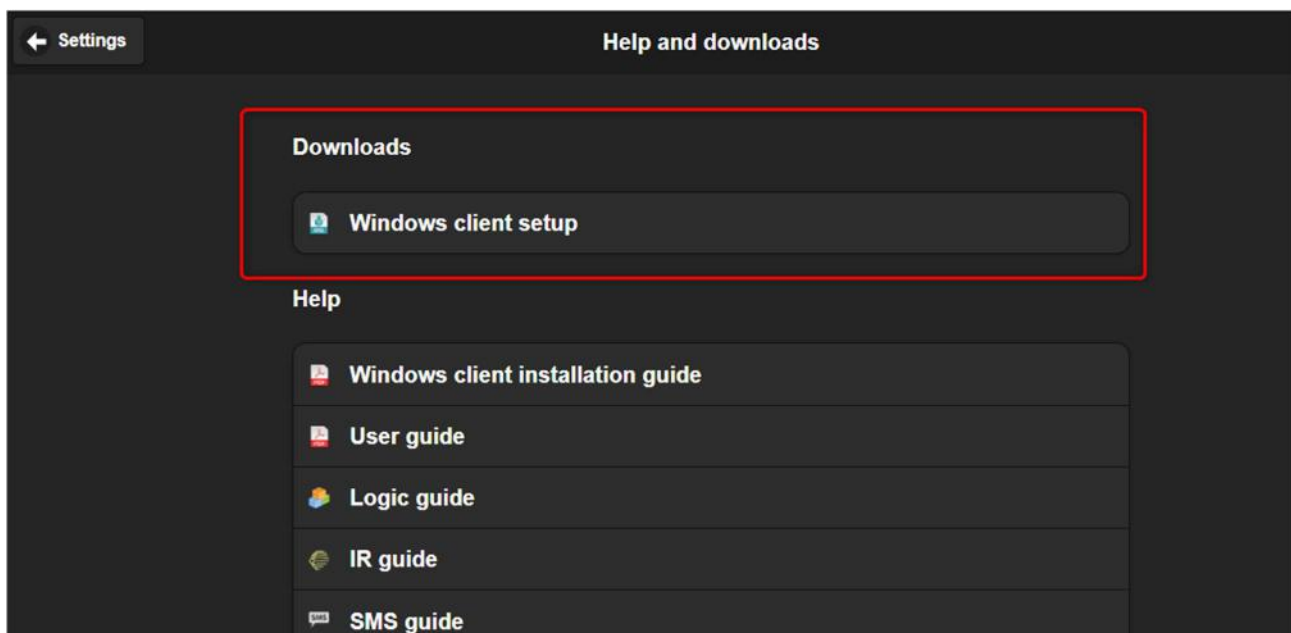
The Home center Windows client can be freely installed in your home network.

### Please note

The client must be the same version as the Home center server running on the Home center Interface Server.

When you update the Home center Interface Server, the correct client will also be added as download link to the settings page in the Webinterface of the Home center Interface Server.

Download the setup to the Windows pc where you want to install the Home center client on.  
Log on through your web browser, go to *Settings / Help and downloads*:



Executing setup is pretty straight forward.

---

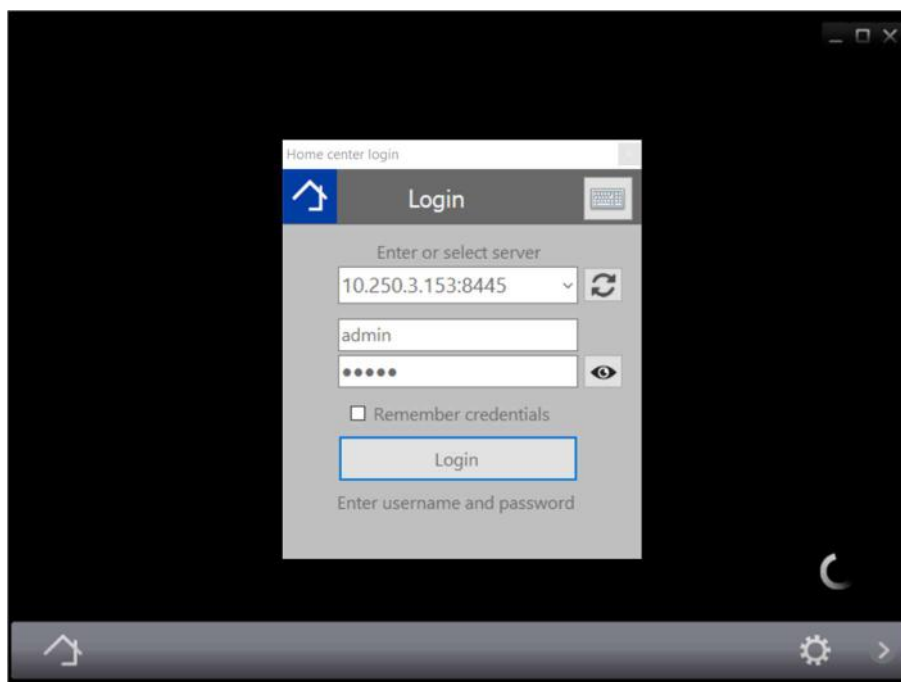
<sup>1</sup>Port forwarding on the internet router needs to be setup, this is not a part of this manual.

Please do read the license agreement in the setup to be aware of the conditions you apply to.



## 5. Running Home center Windows Client

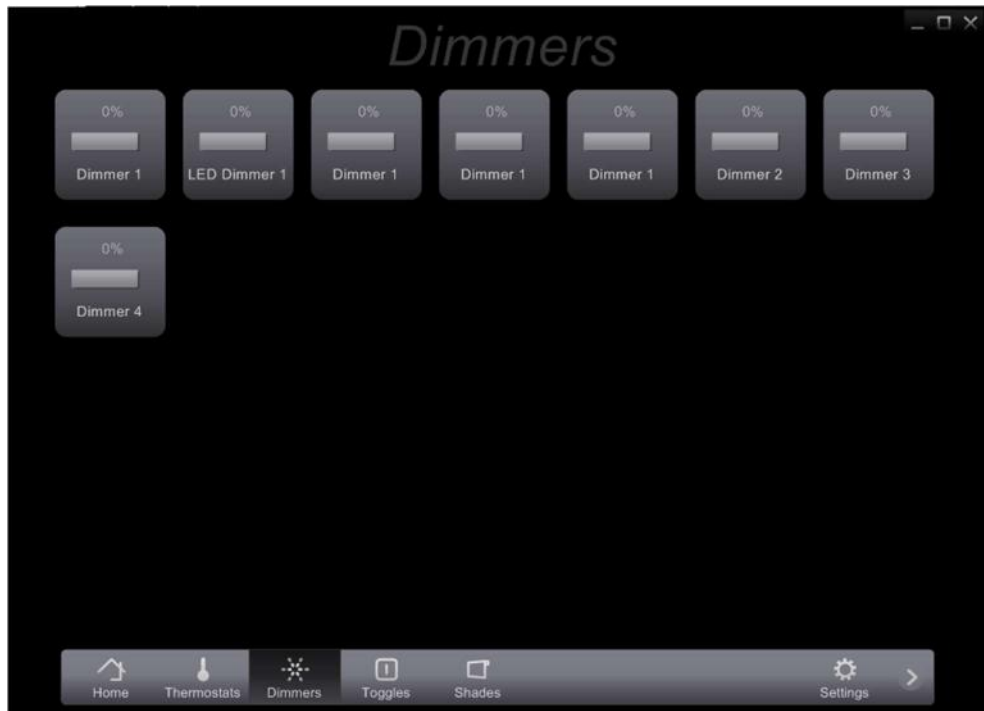
After installation, run the Home center client. The Home center client will automatically detect the Home center Interface Server in your home network. You will be prompted to login. The default user name and password are filled in for you (admin – admin) so you don't have to type anything. Just click 'Login'.



Now you are ready to use your Home center!

The program will help you to get started. If the bus is properly connected, Home center Interface Server will have scanned the bus and automatically created zones per type of component: thermostats, dimmers, toggles, shades, energy monitors, Sonos players, inputs and macro's. They will be directly

accessible on the quick bar at the bottom of the screen. You are now ready to operate your home automation system.



## 6. Installing on other computers

You can install the client as many times as you want. They will all show the current status of your home automation system. The only limitation is the amount of simultaneous connections. The basic license allows 4 simultaneous client connections.

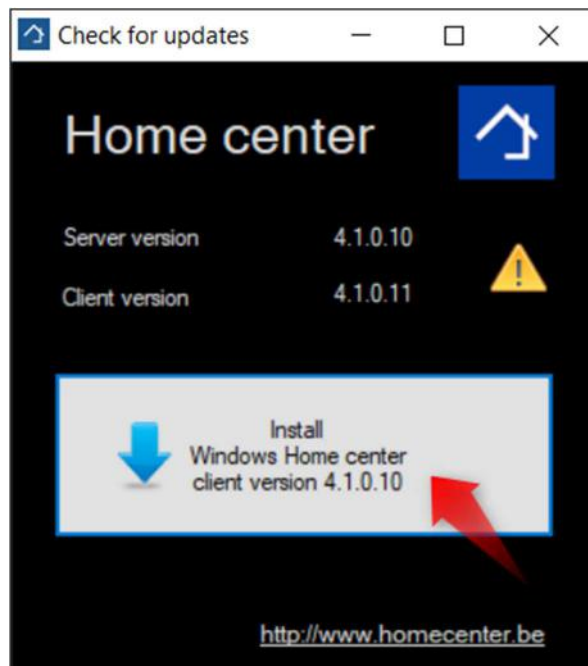
### So, what is next?!?

If you can't wait, start playing around. But reading the Home center user guide will be helpful to fine tune your settings! This guide is also available for download at the Settings page of the webinterface of the Home center Interface Server.

If you have familiarised yourself enough, you can start using the logic module of the Home center Interface Server. The guide is also available for download at the Settings page.

## 7. Updating to new version

After updating the Home center server module, the Windows client must update also! When starting the windows client, you will be prompted to update:



**Click the gray button in the center of this pop up screen** to start the download of the new version and the upgrade!  
Complete the setup wizard.  
That's it!