

HOME CENTER

HOME AUTOMATION SERVER



www.homecenter.be/start

4.1.0.9

User guide

1.	What is in this guide?	6
2.	About Home center	6
3.	Home center requirements	6
4.	Home center quick overview	7
4.1.	The Home center Interface Server.....	7
4.1.1.	Connect Home center Interface Server to the bus	7
4.1.2.	Scanning and downloading configuration.....	8
4.1.3.	Connecting to the Home center Interface Server.....	8
4.2.	Home center clients	9
4.2.1.	Connections from home center clients.....	9
4.2.2.	Login	9
4.2.3.	Home center client for Windows.....	10
	Auto connect to Home center server	10
	Auto configuration.....	11
	Connection stability	12
4.2.4.	Home center for iPhone/iPad.....	13
4.2.5.	Home center for Web	13
5.	Home center for Windows	13
5.1.	Navigating through the screens.....	13
5.2.	Operating controls and reading live statuses.....	14
5.2.1.	Toggles.....	15
	On/off switch.....	15
	Momentary	15
5.2.2.	Dimmers	15
5.2.3.	Shades	16
5.2.4.	Thermostats.....	17
5.2.5.	Macro's.....	18
5.3.	Changing the layout of the controls	18
5.3.1.	Default control layout	18
5.3.2.	Changing the layout for each control individually.....	19
5.4.	Arranging the controls in views or zones	19
5.4.1.	Auto create zones	20
5.4.2.	Importing Trikker file.....	21
5.4.3.	Controlling the order of the zones.....	21
5.4.4.	Adding and removing zones	22
5.4.5.	Editing a zone	22
	Adding a control on the zone.....	23
	Moving a control on the zone	24
	Naming the zone.....	24
	Setting a background image on the zone.....	24

Scaling the buttons	25
Assign an icon	25
Changing the control layout	25
Properties available to all type of controls	25
Specific properties for each type of control	26
Removing controls.....	26
Returning to our example	26
5.5. Configuring the quick access bar	27
5.6. Making a backup of your configuration.....	28
5.7. What if you make changes in your home automation system?.....	28
5.8. Disable animations on slower systems	29
5.9. User management	29
5.9.1. User management on the Home center Interface Server.....	29
5.10. Problem solving.....	30
5.10.1. the status screen.....	30
Connection to the server	31
Connection to the bus	31
5.10.2. The 'About' screen.....	31
5.11. Extras	32
5.11.1. Clock.....	32
5.11.2. Egg timers.....	32
5.12. Screensaver	33
6. Home center camera extensions.....	33
6.1. Connecting to the camera.....	34
6.2. Adding controls to the live feed window	34
6.3. Auto triggering the camera	35
7. Home center for iPhone/iPad.....	35
7.1. Download and install from App store	35
7.2. Username and password	35
7.3. Home center for iPhone Usage.....	36
7.3.1. Toggles.....	36
7.3.2. Dimmers.....	36
7.3.3. Shades	37
7.3.4. Thermostats.....	37
8. Connect to home center through 4G	38
8.1. Through the Home center cloud.....	38
8.2. Through DynDNS.....	38
9. Connect IR devices	38
10. Email and SMS.....	38
11. Logging and monitoring	38
12. Presence simulator	38

1. What is in this guide?

This guide explains how to use and configure Home center to operate your Home automation system.

2. About Home center

Home center is software by Stijnen Solutions to operate your home automation installation.



We strongly encourage you to follow the online training at <https://www.homecenter.be/start>

3. Home center requirements

This is a short overview of the software and hardware related aspects that you need to be aware of before you dive further into Home center.

Home center server is pre-installed on the Home center Interface Server.

Home center client for windows runs on a Microsoft Windows PC.

Home center for iPhone/iPad runs on iOS4+ and must be acquired separately from the Apple App store.

Home center Web interface runs in a browser supporting HTML5 (On Android and other devices)

Please note

Home center Interface Server is required to use Home center for iPhone/iPad!

Home center client on Windows is required to configure your Home center software installation.

Home center for iPhone/iPad downloads automatically the configuration from the Home center server on Windows.

Windows Home center client requirements

Please check to Home client installation guide.

Home center for iPhone/iPad requirements

iPhone, iPod touch or iPad with iOS4.

You must have access to the App store to download the app.

WiFi or GPRS¹ connectivity.

Home center server is required to connect to the home automation system!

Camera connectivity

Windows 32-bit or 64-bit OS

¹Port forwarding on the internet router needs to be setup, this is not a part of this manual.

Web Browser (Android and other operating systems)

Web browser must support HTML5 and web sockets (Chrome, Firefox and Microsoft Edge)

4. Home center quick overview

This chapter gives an overview on how to set up your initial configuration and gives an insight on all aspects you need to know about to get a quick start.

The concept of Home center is set up to be as easy as possible to configure and operate. This is achieved by letting the software do the configuration for you and be plug and play.

The software consist of two main parts

1. Home center Interface Server (running on the Home center server)
2. Home center client software (user interface: Windows client, Web client, iOS client)

4.1. The Home center Interface Server

To activate the device for the first time, internet access is required. Check the getting started guide for details.

The Home center Interface Server is a device that communicates with the bus. Home center clients connect to this server to operate and monitor your home automation system.

With a basic license the server can accept up to 4 simultaneous client connections. This is: Home center windows clients, Home center for iPhone/iPad clients or web browser clients.

The Home center Interface Server must get up and running first before you can start monitoring and controlling your home automation system!

4.1.1. Connect Home center Interface Server to the bus

The HIS v2 is a server module that is connected to your Velbus installation as well as to your network. Connect the HIS v2 to your home network via a network cable with a standard network connection (RJ45). **Important: always connect the bus (power supply) last.**



4.1.2. Scanning and downloading configuration

When starting the Home center Interface Server for the first time, the server will scan automatically for any available and supported home automation systems that are connected to the computer. It will scan USB , RS232 devices and network. When a home automation system is found, it sets up a connection and starts downloading the configuration. Scanning and downloading can take a few minutes.

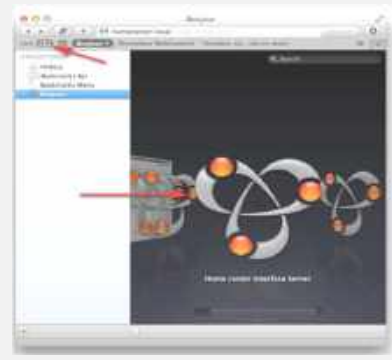
You can activate a re-scan and re-download from the Home center client for Windows! More in chapter 5.7 What if you make changes in your home automation system?

4.1.3. Connecting to the Home center Interface Server

The Home center Interface server is automatically discovered in you network through **HCDiscovery** tool, **UPNP** and **Bonjour**.

1. Windows 7, 8 of 10 in a common home network
Select *Network* from the *Windows Explorer*. Double-click the *Home center Server Interface* icon to open the web page (UPNP detection).

2. Mac OS X in a common home network
Open Safari, click on *bookmarks* (the open book icon). On the left, select *Bonjour*. Navigate through the items until you see your *Home center Interface server*. Double click on it.



3. Via the **Discovery tool** which can be found on <http://download.homecenter.be> (UPNP detection and own broadcast detection). When you start the program, you will immediately see the available Home center server(s) (if the firewall on your PC or the router settings detects the Do not block the module in the network). Select the Home center server and click *Open in browser*.



4. You can also enter the IP address of your HIS v2 directly into the **browser's address bar**. You can use this IP address retrieval via the iPhone/iPad app via the WIFI connected to the network in which the Home center module is located: the IP address appears automatically in the application. Or via the Home center client on Windows, this can be seen on the login screen.

4.2. Home center clients

There are currently 3 clients available to control and monitor the home automation system.

1. Home center client for Windows
2. Home center for iPhone / iPad
3. Web interface (Android and other operating systems)

4.2.1. Connections from home center clients

Home center clients connect to the Home center server through the IP network (wired or WiFi). This way clients are able to operate your home automation system and receive live status updates.

4.2.2. Login

When you start the Home center client, you will be prompted to login. The default user name and password are filled in for you (admin – admin) so you don't have to type anything. Just click 'Login'.

More about login and user management in chapter 5.9 User management.

4.2.3. Home center client for Windows



A download link of the setup of Home center Windows client is available on the settings page of the web interface of the Home center Interface server. This can be installed on any Windows PC. The PC must be located in the network, so the Home center client is able to reach the Home center server.

Auto connect to Home center server

At first start up of the Home center client, the client will try to detect the Home center server located in your home network.

When the Home center Interface Server is running and discovered, the IP address of the computer on which it is running will be selected (image). The default user name and password are filled in for you (admin – admin) so you don't have to type anything. Just click 'Login'.



Home center Windows client automatically loads the configuration from the server.

The IP address will be stored in the local settings when the Home center client is closed. So the next time you start the client, it will immediately reconnect to the server.

If the auto detection should fail...

Make sure the Home center Interface is up and running in your local network. If the Home center Interface Server is still booting, the client will retry a few times to set up the connection.

You can always manually fill in the IP and port of the server manually and press 'Login'.

If the client is still unable to connect...

Possible causes:

- The network cable may be disconnected
- The network is unavailable on the client computer
- A firewall might be blocking the access
- A router might be blocking the access
- The Home center server is not started or was stopped

Solutions:

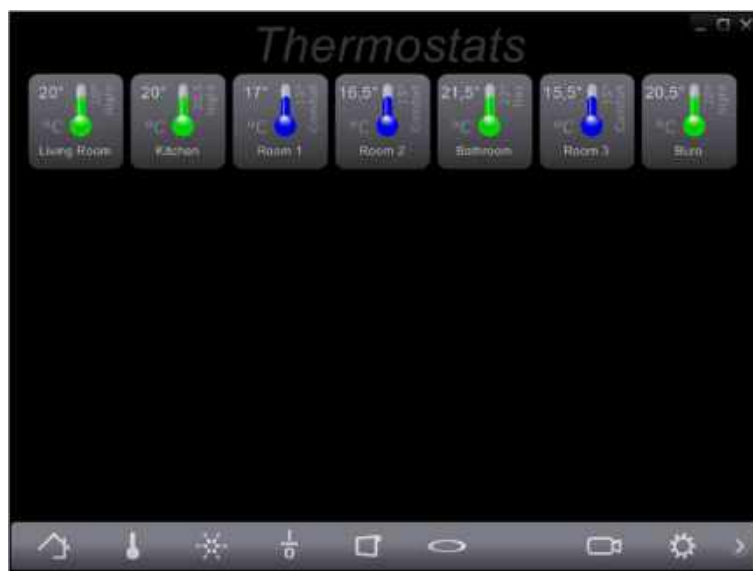
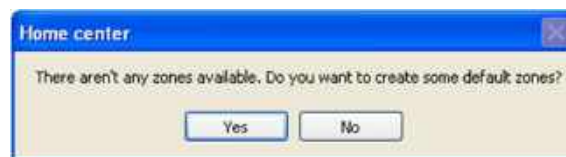
- Verify the network
- Check the firewall
- Verify that the Home center Interface Server is active

When the server is still starting, for instance on first start, the server downloads the configuration from the bus, this may take a while. The client will wait until the server is ready.

Auto configuration

The program will help you to get started. If the bus is properly connected, Home center will have scanned the bus and automatically created zones per type of component: thermostats, dimmers, toggles, shades, energy monitors, Sonos players, inputs and macro's. They will be directly accessible on the quick bar at the bottom of the screen. You are immediately ready to operate your home automation system.

If for some reason no modules were detected, the next time the client connects, you will be asked if you want to make a default configuration. Selecting 'yes' will let you choose to create zones for all thermostats, dimmers, toggles, shades and macro's and assign them to the quick access bar.



The auto configuration gets you ready to operate your home automation system without any extra effort.

More details on how to configure and personalize the user interface will follow in the next chapters.

Connection stability

If for some reason the connection to the Home center server is lost, the client will try to re-establish the connection when you operate a button. You don't need to manually reconnect to the server.

4.2.4. Home center for iPhone/iPad



Home center for iPhone/iPad is a native iPhone/iPad application, not a web client. The advantage is that this works much faster and offers a very reliable and enhanced interface.

Install the free Home center for iPhone/iPad app from the Apple app store.

The connection is verified with a username and password. Provide the username and password through the settings!

When starting Home center for iPhone/iPad, the app will try to detect the Home center server located in your home network through WiFi. If found, the connection will automatically be established.

More details on how to use and configure Home center for iPhone: [35 Home center for iPhone/iPad](#)

4.2.5. Home center for Web

The web based app is designed for Android devices, but also works on other (mobile) devices running a browser that supports HTML5 and web sockets.

To check if the browser on your device supports the Home center web app, open the following page with the browser:

<http://www.stijnen.be/browsertest/>

5. Home center for Windows

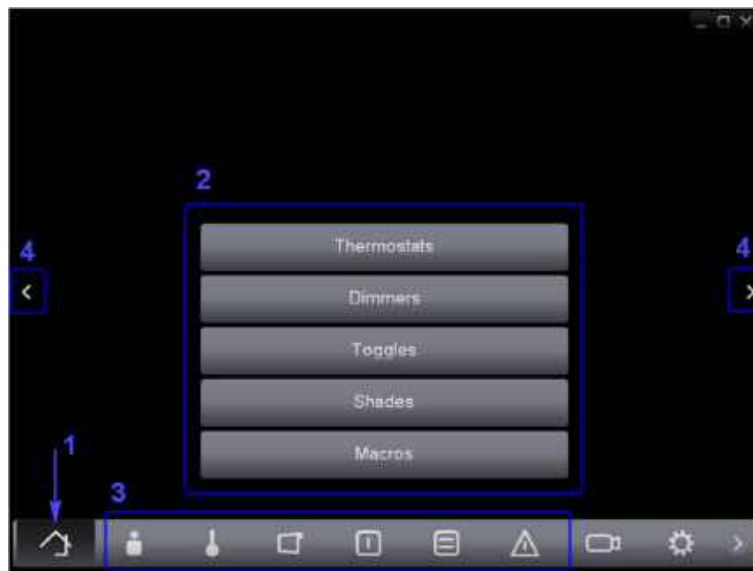
This chapter will show in detail how to operate and read control statuses in Home center for Windows. If you already tested the software, you may have experienced that most aspects are self-explaining and very obvious. In this case, you will run through the first part of this chapter like a high-speed train!

This chapter also explains how to customize your configuration. Let's get creative!

5.1. Navigating through the screens

At first startup, Home center created an auto-configuration for you. You can start operating your Home automation system right away.

Start by clicking the *Home button* **(1)** on the bottom left of the screen. You now see a list of the views or *zones* Home center created.



To open a zone and to start controlling your home automation system, click a button on the center of the screen (2). To go to another zone, you can click again on the *Home button* and select another zone.

But you can get there faster! Select a button from the quick access bar on the bottom of the screen (3). This will immediately open the zone that is connected to the clicked button.

You can also scroll through the zones by clicking the small "<" and ">" icons on the center left and right of the screen (4).

Now you can immediately start operating your Home automation system.



5.2. Operating controls and reading live statuses



In Home center controls are divided into separate types according to their function.

- Toggles: light switches, controlled outlets, ... anything that can be switched ON or OFF²
- Dimmers: dimmable lights, engine, ...
- Shades: sunshades, shutters, ... anything that can go UP and DOWN (and STOP somewhere in between)
- Thermostats: read current temperature and control the desired temperature
- Macro's: combined functions that you have provided in your home automation configuration, they are activated with one click.
- Sonos players
- Energy input (if supported by the home automation system)

5.2.1. Toggles

On/off switch

Reading the status



	
The toggle is OFF when the icon is gray.	The toggle is ON when the icon is colored.

Operating the toggle

Just click once to toggle!

Momentary

Reading the status

	
The momentary is OFF when the icon is gray.	The momentary is ON when the icon is colored.

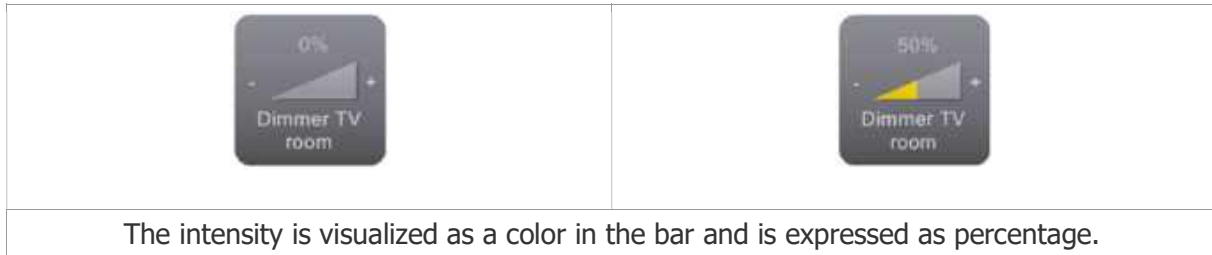
Operating the momentary

Just click to activate! Release to de-activate.

5.2.2. Dimmers

²For Qbus: Timers are also available: these resemble toggles, but can only be set to ON

Reading the status



Operating the dimmer

Short click

Will toggle the dimmer on/off.

- Click – or + shortly: the dimmer is reduced to zero or is activated to the default ON value.
- Click – or + and holding for a long time, the dimmer will reduce or increase gradually.

Long press

Hold down the button for about 1 second to open a large view of the dimmer.



- Click up arrow or down arrow shortly: the dimmer is reduced to zero or is activated to the default ON value.
- Click up arrow or down arrow and holding for a long time, the dimmer will reduce or increase gradually. A progress bar will appear and show the estimated value.
- You can also click somewhere on the bar to choose an intensity.
- Select a button on the right to choose a preset value.




5.2.3. Shades

Reading the status


If a shade is going up or down the corresponding arrow will be colored red. When a shade is not in

motion, no arrow is lit.

Home center also remembers the last movement of the shade and thus shows the current state of the shade: OPEN or CLOSED.


		
Shade is OPEN and not in motion (STOPPED)	Shade is OPEN and is now going DOWN	Shade is CLOSED and is now going UP

Operating the shade

	<p>Click the UP arrow to make the shade go up (or open). Click again to STOP the shade.</p> <p>Click the DOWN arrow to make the shade go down (or close). Click again to STOP the shade.</p>
---	--


5.2.4. Thermostats

Reading the status

	<p>The current temperature is displayed in the upper left corner.</p> <p>On the right you can read the active regime and target temperature</p>
---	---

Operating the thermostat

Click the thermostat to open a detailed screen.



<p>On the right you can select a regime by pressing one of the buttons. (1)</p> <p>On the left you can control the temperature in detail by clicking the up or down arrow. (2)</p>

5.2.5. Macro's

Reading the status

Does not apply here

Operating the macro

	<p>Just click it!</p> <p>The resulting actions will be visible in your house and on the affected controls in Home center.</p>
---	---

5.3. Changing the layout of the controls

The layout of the controls can be changed for each control individually or for all controls, which have the default layout applied, in one operation. The customization is done through the *Settings*. Open the *Settings* by clicking on the gear icon on the bottom left of the screen.³

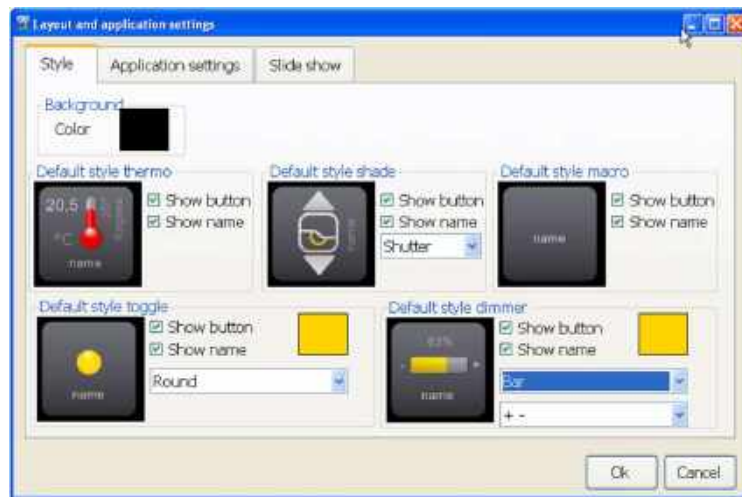


5.3.1. Default control layout

Changing the default layout for the controls affects all the controls which still have the default layout applied. If you are still working on the automatically created configuration, all controls will have the default layout.

To change the default layout of the controls open the *Layout and application settings*. First, click the *Settings* button on the left bottom of the screen and then click *Layout and application settings*.

³The *manage cameras* option is only available if you have camera enabled in your license.



On the *Style* tab, you can see the default layout style for each type of controls. Changing the style for, for instance, a toggle will affect all toggles which didn't get an individual style.

For each type of control you can hide the gray button and name. This might be useful if you like a sleek style or you want to fit many controls on one screen.

For toggles, dimmers and shades you can change the default icon.

For toggles and dimmers you can change the default color of the ON value.

5.3.2. Changing the layout for each control individually

You can also set the style for each control separately. This is done through the management of the zones. When editing a zone you can set the style for each control on that zone. This will be explained in the next paragraph.(5.4.5 Editing a zone)

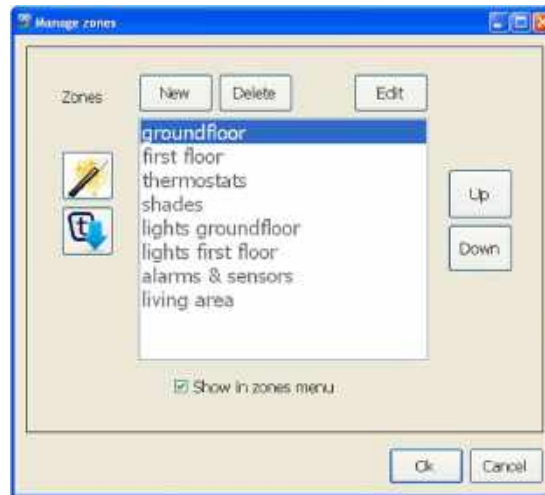
5.4. Arranging the controls in views or zones

To manage your home automation system, you need a quick access to all the available controls. Home center lets you arrange these controls in views, we call them '*Zones*'. Some tips on which kind of zones you can make:

- Create zones for controls with similar functionality. For instance, all the thermostats of your house.
- Create zones for controls which belong together. For instance, all the controls of one room or floor. You might want to add a floor plan or a photo of that room on the background.
- Create zones for controls with complementary functionality. Put together an alarm sensor connected to an automatic door and the button to open and close that door.

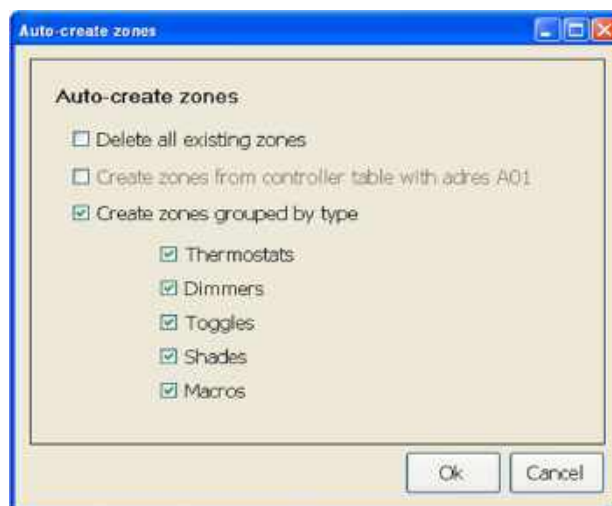
You can also put the same control multiple times on one zone for a better effect. You can also repeat the same control on different zones.

To create and edit these zones, go to *Settings* and select *Manage zones*. This will open the screen to manage the zones. The names of the zones that already have been created are listed here.



5.4.1. Auto create zones

To help you to take a quick start you can make an auto configuration. The first time you started Home center, the program already made this for you. On the *Manage zones* screen, click the button on the left with a magic wand. You will see a screen that prompts you which actions to take.



Delete all existing zones

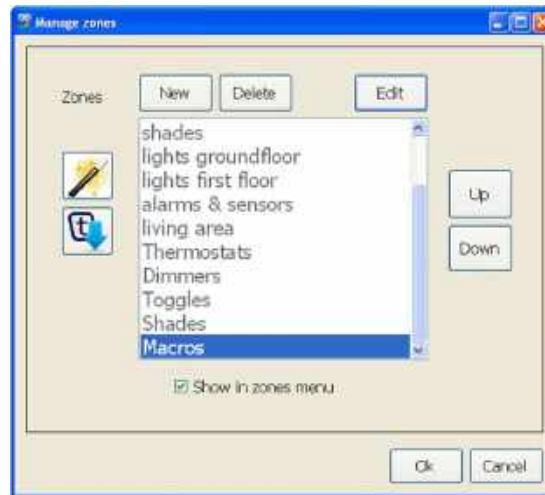
If you already created zones and want to delete them to start over, put a check mark with this option. If you want to keep the existing zones, don't select this!

Create zones grouped by type

This will create a zone for each type off control. You can select each type individually. For instance you just want to create a zone with all thermostats: remove all the check marks for the other types, and just keep the check mark for *Thermostats*.

If you have many controls of one type so they don't fit on one screen, the wizard will split them up in separate screens.

Click OK to create the zones!



In the example the wizard has added the zones to the bottom of the list.

5.4.2. Importing Trikker file



Importing schemes from Trikker is possible. Trikker, a product by Bluebits⁴, is a drawing program to quickly and easily draw single wire schemes and situation sketches of electrical installations. Also home automation installations can perfectly be drawn with Trikker. The address of each component can be assigned in Trikker.

The schemes drawn with Trikker can directly be imported in Home center. In the Home center clients the floor-plan and the buttons of all devices appear. This way the entire home automation system is shown and is ready to be operated.

How to create an export file in Trikker and how to import it in Home center is described in a separate manual.

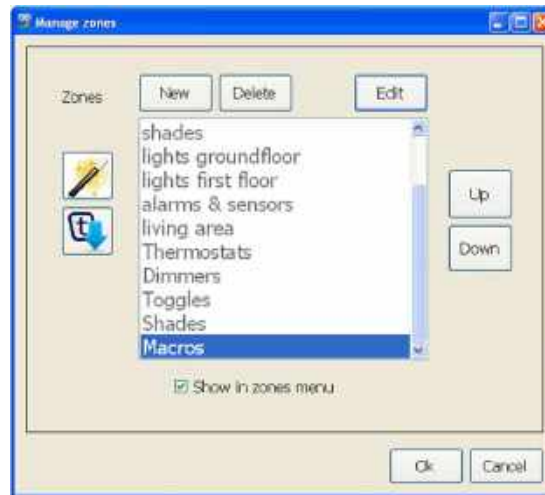
Please note

The addresses provided in Trikker should be identical to the addresses you see in the Home automation system! These are hexadecimal values!

5.4.3. Controlling the order of the zones

When you click the *Home button* in Home center, this list of zones is displayed in the same order as you see here.

⁴<http://www.bluebits.be/>



To rearrange this list, select the zone you want to move. On the right of the list there is a button to move it *Up* or *Down*.

5.4.4. Adding and removing zones

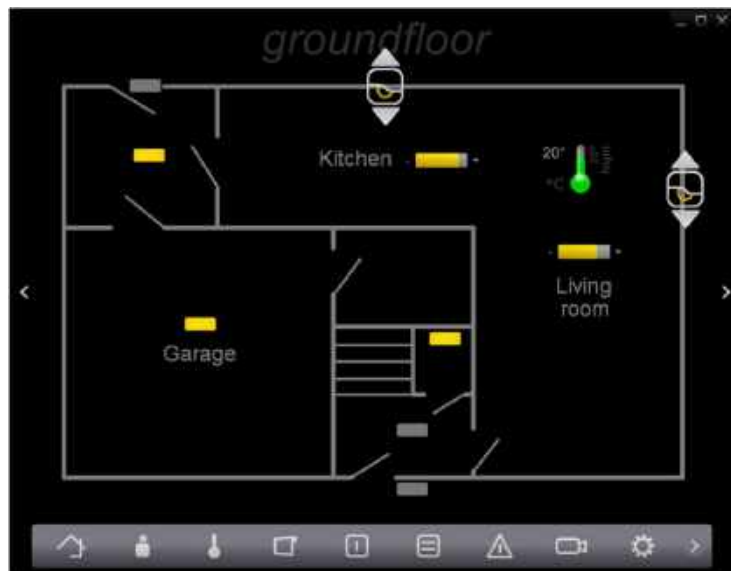
To add a new zone, click the *New* button above the list. This will add a new (empty) zone on the bottom off the list.

To remove a zone select the zone in the list and click the *Delete* button.

In some cases you might want to hide a zone from the list displayed when clicking the *Home button*. This could be a zone you are working on or one you are not using but you just don't want to throw it away. Select the zone in the list and remove the check mark *Show in zones menu* just beneath the list. This way you can make as many zones as you want and not disturb your regular use of Home center.

5.4.5. Editing a zone

Now it is time to do some real work. Let's start composing our own zone! As an example we will make a zone for the ground floor of our house. We will put a floor plan up and add all lights, thermostats and shades on it. The result might look something like this:

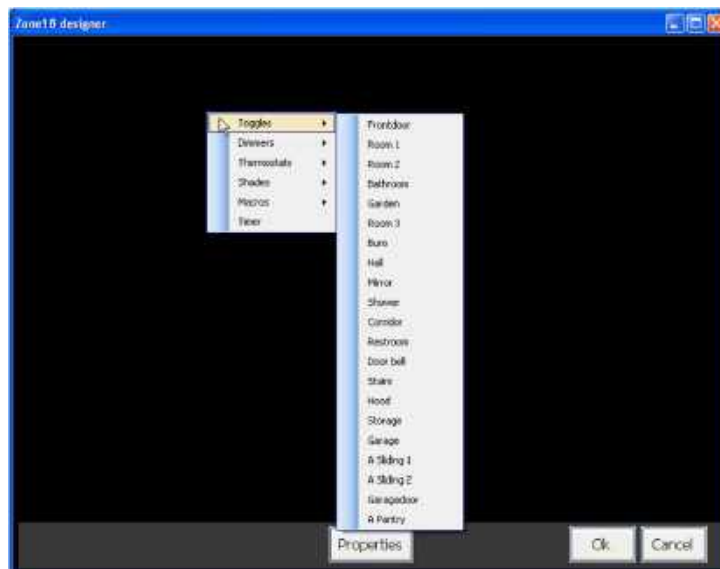


Open the *Manage zones* screen. Select *New*. This will add a new zone to the bottom of our list. Now click the *Edit* button on the right above the list.

You will start with an empty edit screen.

Adding a control on the zone

To put in some controls, right click somewhere on the screen. A menu pops up with all available controls, separated per type. Select a control. This control will be added on the spot you first clicked.



Repeat this action to add more controls to the screen.

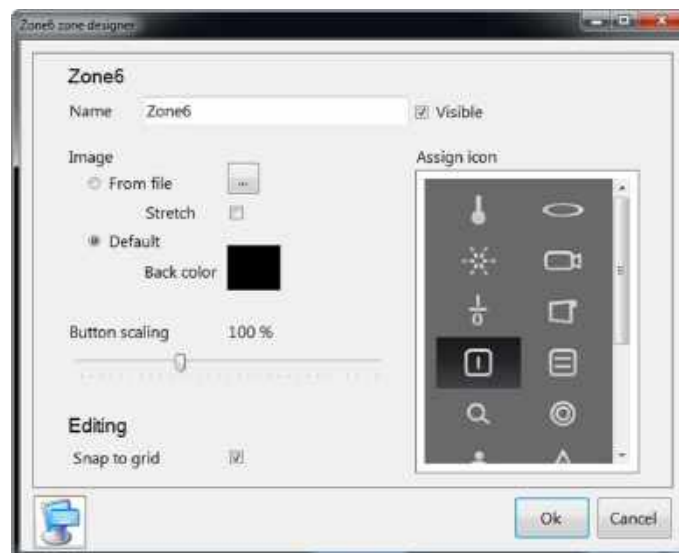


Moving a control on the zone

Moving a control is done by 'dragging it around': click on it with the left mouse button, hold it down and move the mouse. The control will follow the movement of the mouse. Release the mouse button to stop dragging.

Naming the zone

Select the *Properties* button on the bottom of the screen to edit the properties of the zone.



Here you can change the title of the zone. This title will appear on top of the screen when you are viewing a zone and on the quick access bar. If you don't want to see the title. Remove the *Visible* check mark, next to the title.

Setting a background image on the zone

On the properties screen you can set the background of the zone. Choose a background color (The default background color is black), or select an image file from your computer system. The accepted

types are BMP, JPG, GIF and PNG. The size of the image is limited to 4 MB. You can also choose to stretch the image to fill the entire screen.

Scaling the buttons

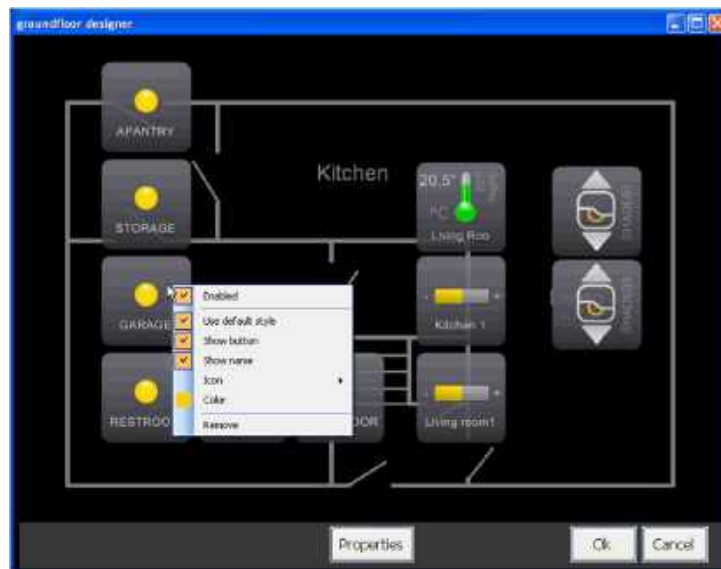
You can make the buttons larger or smaller on the screen by dragging the slider to the right or left.

Assign an icon

Select an icon to identify the zone. This icon will appear on the quick access bar if you put this zone on it. This icon will also be displayed on the iPhone and iPad interface.

Changing the control layout

For each control placed on the zone, the layout can be customized. To do this, make sure you are on the designer of the zone. Right click on the control to open a menu with options you can set for the button. This menu is different for each type of controls.



Properties available to all type of controls

Default style

For each newly added control, the option *Use default style* is selected. This means the control is displayed as set in 18 Default control layout. When you have changed the properties, you can always return to the default layout by selecting *Use default style*.

Show button

For each type of control the gray button background can be shown or hidden.

Show name

For each type of control the name can be shown or hidden.

Enabled

A control can be disabled, the control will get a 'read only' state. This means you will not be able to operate the control by clicking it in Home center. This is useful for alarm sensors, for instance. Newly

added controls are always enabled by default.

Specific properties for each type of control

Toggle control options

Icon: a different icon can be chosen

Color: the color of the control icon when enabled.

Dimmer control options

Icon: a different icon can be chosen

Color: the color of the control icon when enabled.

Alternative presentation: show or don't show the percentage value

Thermostat control options

Alternative presentation: switch to a presentation where only the temperature and the icon are shown

Shade control options

Icon: a different icon can be chosen

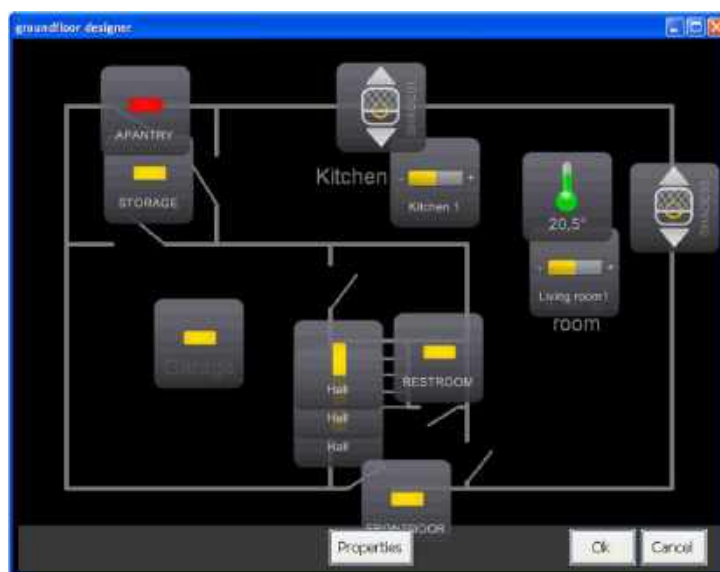
Removing controls

Right click the control that you want to remove. Select *Remove*.

Returning to our example

In the example, I have:

- Moved the controls on the floor plan to right spot.
- Added the 'Hall' light 2 more times. (The light in the hall is a led strip stretching over the stairs)
- Changed the icons for the hall light controls to vertical strips
- Change the icons for all other toggles to a horizontal strip.
- For the alarm sensor, change the color of the 'enabled' state to RED.
- Changed the icon for the sunshades in the kitchen and living room.
- Selected Alternative presentation for the thermostat in the living room



To finish up, I removed all the gray buttons and names. This is the final result:

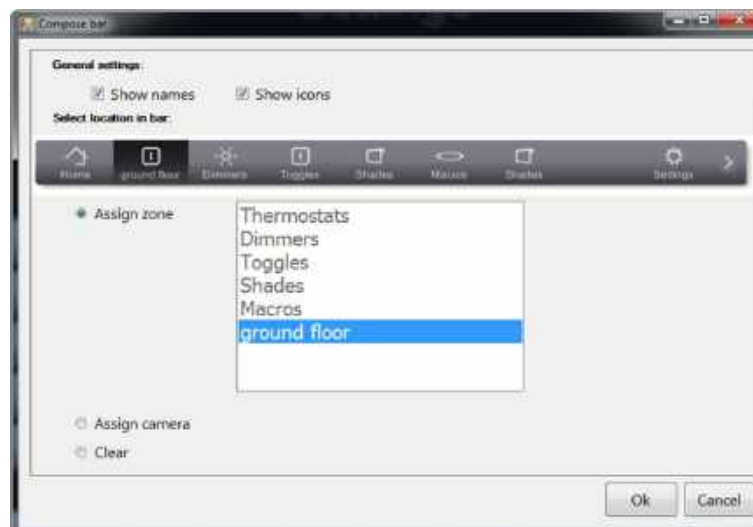


This gives you an idea of the possibilities Home center offers to create good looking and handy views.

5.5. Configuring the quick access bar

The quick access bar is a very handy tool which lets you switch very quickly between important zones. The bar has seven buttons where you can assign your favorite zones.

Go to *Settings* and select *Manage bar*.



General settings

You can choose to show the names on the bar and/or the icons.

Please note: the icons are assigned to a zone via the zone editor, as explained in 5.4.5 Editing a zone - Assign an icon p.25

Setting zones on the bar

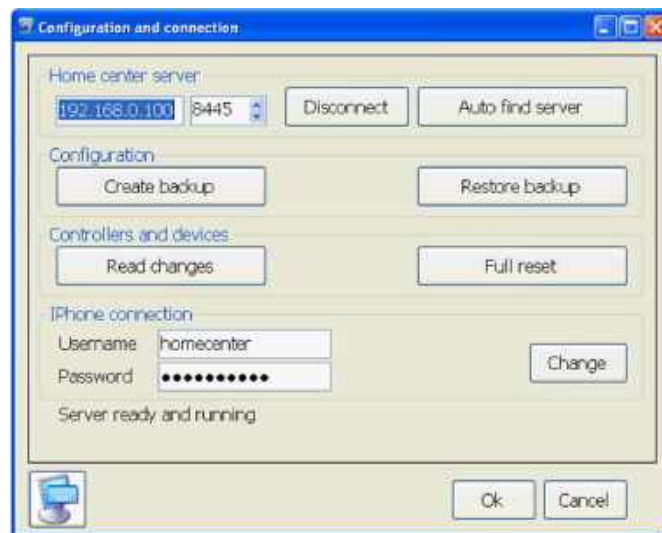
For example, we might want to assign the 'ground floor' zone to the first button (next to the *Home button*). First select the spot in the quick access bar where you want to put the zone. Then select the 'ground floor' from the list of zones. Continue to do this for each zone you want a quick link for.

You can leave a spot blank by not selecting a zone, but choosing the radio button *Clear* instead.

The *Assign camera* option is only available if you have cameras enabled in your license.

5.6. Making a backup of your configuration

At some point you might want to save the configuration you made for safeguard or because you want to experiment a bit and don't want to lose all the work you have done. To do this, go to the *Settings* and select *Configuration and connection*.



Under *Configuration* there are 2 buttons:

- *Create backup*: this will create a backup from your configuration. You can assign a folder location where the backup should be stored.
- *Restore backup*: this replaces the current configuration with the one you stored earlier. You will be prompted for a backup file.

The backup file contains all the client settings:

- default button layout
- layouts of the zones, including button styles and background images
- the configuration from the bus.

5.7. What if you make changes in your home automation system?

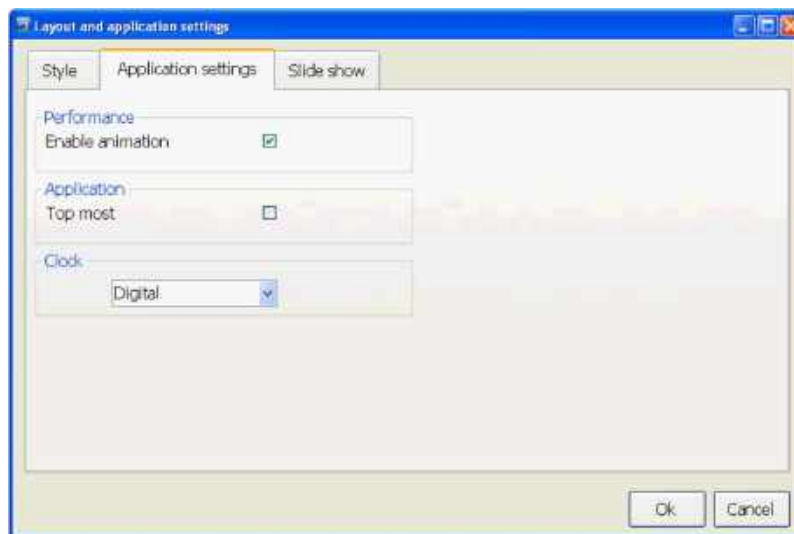
When Home center was loaded the first time, the entire bus was scanned to find all available modules and read all their properties, including names, macro's, etc. You can change these settings through the configuration program of your home automation system. You can replace modules or even add new ones. Home center isn't automatically aware of these changes. To get all this new information in Home center, the changes have to be read from the bus. To do this, go to the *Settings* and select *Configuration and connection*.

Under *Controllers and devices* there are 2 buttons:

- **Read changes:** this will read all the changes you made in the bus: changed names, new macro's, new modules, ...
- **Full reset:** this will throw away all information from the bus, zones, logic functions, ... and do a full re-scan. If you are still in an early stage of configuring your home automation system and home center, this can be useful. Before pressing this button, be sure to make a backup of your current configuration. You can always restore your backup.

5.8. Disable animations on slower systems

If you have installed Home center for Windows on a computer with a somewhat lighter graphics card. The animations might not be very fluent. You can disable the animations from *Settings > Layout and applications settings*. Select the tab *Application settings*.



Under performance, remove the check mark for *Enable animations*.

5.9. User management

When Home center connects to the Home center server, a login is required. The system has automatically 2 default users:

- Administrator: username: *admin* password: *admin*
This user has full control over the system. This means this user can create, edit and delete zones in the 'Manage zones' and is able to configure the quick access bar, etc.
- Minimal user: username: *homecenter* password: *homecenter*
This user has limited access. This user can operate the buttons on the zones, but is unable to create, edit and delete zones. This user is also not allowed to configure the quick access bar.

It is advised to change these to default users. This can be done in the Home center user management.

5.9.1. User management on the Home center Interface Server

User management on the Home center Interface Server is done through the web interface. See 4.1.3 Connecting to the Home center Interface Server and 4.2.5 Home center for Web. Login with your administrator username and password. Click on "Settings" at the bottom right and choose "User management". Click on "edit" next to the user you want to modify.

Permissions

- Pass through Yes/No: Allow or deny this user account to connect to the bus (only for some Home automation systems).
- Settings Yes/No: Allow or deny this user account to access the settings.
- Zones
 - None: the user has no access to the zones
 - ReadOnly: the user has access to the zones but can not operate the buttons
 - Operate: the user has access to the zones and can operate the buttons
 - Manage: the user has access to the zones, he/she can operate the buttons, he/she can edit the zones
- Bar
 - None: the user has no access to the bar
 - ReadOnly: the user has access to the bar but can not operate the buttons
 - Operate: the user has access to the bar and can operate the buttons
 - Manage: the user has access to the bar, he/she can operate the buttons, he/she can edit the bar
- Cameras
 - None: the user has no access to the camera(s)
 - ReadOnly: the user has access to the camera but can not operate the buttons
 - Operate: the user has access to the camera and can operate the buttons
 - Manage: the user has access to the camera, he/she can operate the buttons, he/she can edit the camera settings

Please note

For the changes to take effect, stop and start the Home center Server.

5.10.Problem solving

5.10.1. the status screen

The status screen automatically pops up when something is wrong with the connection to the bus or the license. This helps you to identify any problems. You can also load this screen from the *Settings*. Select *Status overview*.

If one of the components doesn't have a green status, the home automation system cannot be operated with the Home Center software.



Connection to the server

This shows the status of the Home center Client - Server connection over TCP network. If this status displays a red sign, the client is not connected to the server.

Note: if the connection to the server is broken, checking the other statuses will fail!

Possible causes:

- The network cable may be disconnected
- The network is unavailable on the client computer
- A firewall might be blocking the access
- A router might be blocking the access
- The Home Center Server is not started or was stopped

Solutions:

- Verify the network
- Check the firewall
- Verify that the Home Center Server is active

Connection to the bus

This shows the status of the connection of the Home center Server to the home automation bus over the serial/USB/Ethernet interface. If this status is a red sign, the server is not connected to the home automation system.

Possible causes:

- The USB/Serial/Ethernet cable may be disconnected from the Home center Interface Server or from the USB/serial/Ethernet interface of the home automation system
- The USB/Serial/Ethernet port/interface might be in use by another program (for instance the Configuration program of your home automation program). In this case the interface is blocked, only one program at the time can connect to the port/interface

Solutions:

- Verify if the cable is correctly connected
- Close any other program that might occupy the USB/Serial/Ethernet port
- Finally restart the Home center server on the Settings page of the Home center web app.

Please note

If the bus is connected with an USB cable, **do not pull the cable** while Home center server or service is running! This will corrupt the connection from the bus to Home center. To recover from this, restart the Home center service on the Settings page of the Home center web app!

5.10.2. The 'About' screen

To open the *About* screen, go to *Settings*, click *About*.

The about screens displays useful information about the Home center you are running.

You will find information about the installed version of Home center, the license and about the Home center server: IP's and the connected Home automation bus.



5.11.Extras

There are some extra features for you to play with. To go to them go to *Settings* and select *Extra*.

5.11.1. Clock

Included in the extras is an analog or digital clock. To choose between a digital or analog clock go to the *Settings* and select *Layout and applications settings*. Select the tab *Application settings*. There you can choose the type of clock.

Load the clock from *Settings* and select *Extra*.

- The clock can be dragged to the desired location on the screen.
- It can be resized by clicking and holding the lower right corner and then moving the mouse pointer.
- To clock always stays on top of Home center.
- To close the clock: double click it.
- If you keep the clock visible when you close home center, next time you start Home center the clock will also be loaded.



5.11.2. Egg timers

There is also an egg timer, which can be loaded multiple times. (Cooking eggs in a pot, potatoes in another pot and a cake in the oven.)



- Drag it around on the screen by clicking and holding the upper part.
- To increase the time, click and hold the +.
- To reduce the time, click and hold the -
- Start the timer by clicking once in the middle of the timer.
- Click again to stop the timer. To make the timer continue, click again...
- When the timer is done, the timer screen flashes RED. Click it to stop the flashing.
- Click the small cross in the upper right corner to close the timer.

5.12. Screensaver

To lower power consumption, you might want to turn off the monitor when it is left idle for some time.

In Windows, when you click (or touch) the screen when it is turned off, you might accidentally operate a button right on the spot you clicked (or touched). To prevent this from happening, Home center activates an overlay to protect the underlying buttons. Because of some limitations in Windows we can not detect with 100% certainty that the monitor is turned off (it depends on the hardware and driver), but detecting that the screensaver is active, does work.

Therefore the overlay is activated when it is detected that the screensaver is active. So it is best to configure your PC to first start a screensaver after, for example, 10 minutes, and then turn off the monitor after 15 minutes.

Our advice

Configure your system to first start a screensaver and some time later to turn off the screen. This, to prevent from accidentally activating a button in Home center when you touch the screen when the monitor is turned off.

6. Home center camera extensions

An available extension for Home center are cameras. They are available through a license update.

Add 1 camera: https://stijnen.be/shop/index.php?id_product=205&controller=product

Add 3 camera's: https://stijnen.be/shop/index.php?id_product=206&controller=product

The supported camera systems are listed here:

<http://homecenter.be/software-features/camera/>

An extended integration is available for 2N intercoms.

See the separate manual *Home center 2N*

Also for Velbus Doorbird intercoms

https://stijnen.be/shop/index.php?controller=search&orderby=position&orderway=desc&search_query=doorbird&submit_search=

The modules are automatically recognized, installed and integrated in Home center. This way you don't need any special knowledge about networking.

The camera can be activated from Home center through a button or automatically by installable triggers on the controls (detector, bell, ... connected to the home automation system). With the image in Home center you can add controls to for instance open the door, turn on the light, ...

6.1. Connecting to the camera

Through the **web browser**, go to *Settings / Configurations / Cameras*. This will open a view where you can add and control your cameras.

Click *New* to add a new camera. Note: the system performs an auto-search for camera's in your network. This takes a few seconds. During this time the *New* button will not work. Wait a few seconds and try again.

Click a line to edit a previously added camera.

In the top you have a drop down box. This will display all the found cameras. Select one to load it in the interface.

Make sure to correctly fill in the **username** and **pass**. Then click Back. Click Update and Click Reload configuration.

From now on, you can Add cameras to the zones. Through the **Windows client**, via *Settings / Manage zones*. You can add is as a button. Don't forget to save the changes to the zones.

If the camera is configured you will see the live feed from the camera when you click the camera icon from the zone.



6.2. Adding controls to the live feed window

From the **Windows client**, you can add buttons on the right of the camera screen. Any available control can be added. Right click in the panel to open the menu with all the controls. Select a control to add it. Add controls to activate a light, open a door, trigger an alarm, ...

To customize the layout of the control right click it to open the options menu.

More details about editing the controls: 5.4.5 Editing a zone

6.3. Auto triggering the camera

See the Home center logic guide.

7. Home center for iPhone/iPad



Home center for iPhone/iPad is a native iPhone/iPad application, not a web client. The advantage is that this works much faster and offers a very reliable and enhanced interface.

Please note

To use Home center for iPhone/iPad, the Home center server needs to be running and must be reachable through WiFi or GPRS.

Just like the Home center for Windows the interface is very much self explaining and obvious. You hardly need a manual. You just need to be aware that a username and password is required to connect to the Home center service. (5.9 User management)



7.1. Download and install from App store

Go to the app store and find the Search box. Enter *Home center*, this should bring you right to the Home center for iPhone/iPad app. Select 'Install'.

7.2. Username and password

To protect your Home center installation, it is required to set a username and password for the iPhone

app. More information in chapter 5.9 User management.



When the Home center iPhone/iPad app has been installed, open the settings. There you can manage your accounts. Each account has a username and password and a server address. Click the 'Add server' to add a new account.

When the Home center service is reachable through wifi, you don't need to fill this in, Home center will do this for you. At first startup Home center for iPhone/iPad will try to locate the Home center service in your local network and automatically connect.

7.3. Home center for iPhone Usage



Home center for iPhone lets you operate and monitor all controls of your system. On connection, all available controls are downloaded to your iPhone. Each control can be operated by tapping it. The result of your action will immediately be visible in your house (for instance light goes on) and in the iPhone app (icon will be lit).

When starting Home center for iPhone, the app will try to detect the Home center server located in your home network through wifi. If found, the connection will automatically be established.

There are no operational limitations in the lite version, every control can be viewed and operated. The only limitation is that the controls cannot be sorted and the *zones* are not available.

7.3.1. Toggles

Toggles are displayed as an item with a round icon and its name next to it. To toggle the control, just tap the item. For instance, the light goes on. Tap again, the light goes off.

7.3.2. Dimmers



In the list, dimmers are displayed as an item with a reversed triangle and its name next to it. To 'toggle' the dimmer, just tap the item.

To have a detailed control, tap the small blue arrow on the right.

In the detail view, you can choose preselected values on the right. Increase or decrease the dimmer by pressing and holding the + triangle or – triangle.

Tapping the + triangle shortly will activate the dimmer. Tapping the – triangle shortly will deactivate the dimmer.

7.3.3. Shades



In the list, shade are displayed as a rectangular item with a shade and its name next to it. To 'toggle' the shade, just tap the item.

To have a detailed control, tap the small blue arrow on the right.

In the detail view, you can make the shade go up by tapping the up arrow. Tap the down arrow to make the shade go down.

7.3.4. Thermostats



In the list, thermostats are displayed as an item with a thermometer and its name next to it. You can also read the current temperature and the active regime.

Tap the small blue arrow on the right to operate the thermostat.

In the detail view, you can choose regimes on the right. Increase or decrease the thermostat value by tapping the + triangle or – triangle.

8. Connect to home center through 4G

8.1. Through the Home center cloud

<https://homecenter.be/manuals/cloud/>

Or fully explained in the online training <https://www.homecenter.be/start>

8.2. Through DynDNS

<https://homecenter.be/manuals/faq/#7>

Or fully explained in the online training <https://www.homecenter.be/start>

9. Connect IR devices

See the separate manual **IR guide**.

10. Email and SMS

See separate manuals **SMS guide** and **Email guide**.

11. Logging and monitoring

See separate manual **Logging guide**.

12. Presence simulator

All information on <http://homecenter.be/software-features/presence-simulator/>